

PLEASE READ AND FOLLOW ALL WARNINGS



1/2" HEAVY DUTY RATCHET

Read Operating Instructions

Always become familiar with all the instructions and warnings before operating any power tool.



Always Wear Approved Eye Protection

Impact resistant eye protection should meet or exceed the standards as set forth in the United States ANSI Z87.1, Occupational and Educational Eye and Face Protection. Look for the marking Z87.1 on your eye protection to insure that it is an approved style. For further information, ANSI Z87.1, Occupational and Educational Eye and Face Protection, is available from the American National Standards Institute, Inc., 11 West 42nd Street, New York, NY 10036.



Hearing Protection is Recommended

Hearing protection should be used when the noise level exposure equals or exceeds an 8 hour time-weighted average sound level of 85 dBA. Process noise, reflective surfaces, other tools being operated nearby, all add to the noise level present in your work area. If you are unable to determine your noise level exposure, we recommend the use of hearing protection.



Avoid Prolonged Exposure to Vibration

Tools can vibrate during use. Prolonged exposure to vibration or very repetitive hand and arm movements, can cause injury. Stop using any tool if discomfort, tingling feeling or pain occurs. You should consult your physician before resuming use of the tool.



90 PSIG Maximum

This tool is designed to operate at

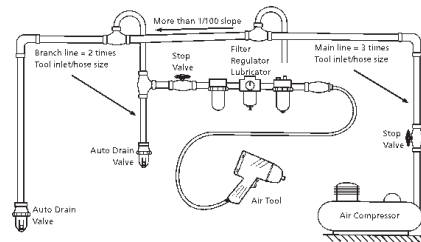
an air pressure of 90 pounds per square inch gauge pressure (90 PSIG) maximum, at the tool. Use of higher air pressure can, and may cause injury. Also, the use of higher air pressure places the internal components under loads and stresses they were not designed for, causing premature failure. The air supply should be clean and dry, preferably lubricated. For best results, drain the moisture from your compressor daily.

WARNING:

Some dust created by power sanding, sawing, grinding, drilling, and other construction activities contains chemicals known to cause cancer, birth defects or reproductive harm. Some examples of these chemicals are:

- Lead from lead-based paints
- Crystalline silica from bricks, cement and other masonry products
- Arsenic and chromium from chemically treated lumber

Your risk from these exposures varies, depending on how often you do this type of work. To reduce your exposure to these chemicals, work in a well-ventilated area and work with approved safety equipment such as those dust masks that are specially designed to filter out microscopic particles.



- Extended length and powerful motor provide 90 ft. lb. torque in hard to reach areas
- Sealed Triple heat treated alloy steel ratchet and head for ultimate reliability
- 1/2" Square drive size
- Precision engineered for added reliability
- Contoured comfort grip and button trigger for operator comfort
- 360° exhaust diffuser



Safety Instructions

The following instructions are furnished as general guidelines for use of your pneumatic tool. They cannot comprehensively cover all possible or conceivable uses of the subject tool. For additional information on the safe use of air tools, we advise you to obtain a copy of ANSI B186.1 Safety Code for Portable Air Tools, available from the following source:

American National Standards Institute, Inc.
11 West 42nd Street
New York, NY 10036.

The use of the word "shall" in the following instructions, indicates that adherence to the particular requirement is necessary to conform to ANSI B186.1.

Tool Application and Usage

Portable tools shall be used only for the purposes intended in their design and within the capacity for which they were intended and rated. It shall be the tool owner's and/or employer's responsibility to instruct each operator in the safe use of the tool. Tools shall not be used without guards and safety

devices as furnished by the manufacturer. Where an air tool is modified or altered, the modifier shall provide the safeguards to enable it to be safely used in the operations intended and to comply with any applicable provisions as contained in ANSI B186.1.

Tool Installation

Pressure regulators shall be used to limit air pressure to the rated pressure where the supply pressure exceeds the tool's rated pressure. Air hoses and lines shall be relieved of compressed air before being disconnected or disjoined, unless there is automatic valve closing protection at the joint being separated. Synthetic lubricants which can cause deterioration of elastomer seals shall not be used in air systems of air tools.

Tool Maintenance

It shall be the tool owner's and/or employer's responsibility to assure that tools are maintained in a safe operating condition. Tool maintenance and repair shall be performed by authorized, trained, competent personnel. Tools shall be disconnected from their compressed air supply before repairs are attempted. Repairs shall be consistent with the manufacturer's recommended procedures. Tool, hoses and fittings shall be replaced if unsuitable for safe operation. It shall be the tool owner's and/or employer's responsibility to keep required rating markings and warnings on the tool in legible condition.

Universal Tool
A Division of Florida Pneumatic Manufacturing Corporation
851 Jupiter Park Lane, Jupiter, Florida 33458
Toll Free 1-800-327-9403

Read these instructions carefully before attempting to install, operate or service this Florida Pneumatic product. Failure to comply with the instructions could result in personal injury and/or property damage! Retain these instructions for future reference.

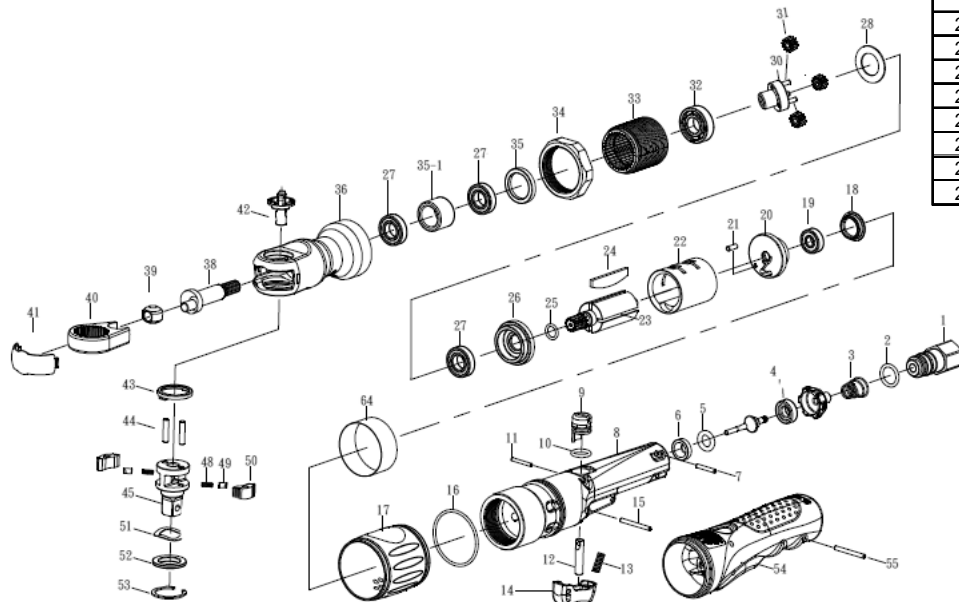


Specifications

Free Speed RPM.....200
 Drive.....1/2-in.
 Working Torque.....95 ft.-lbs.
 Length.....13 in.
 Weight.....3-3/4 lbs.
 Air Inlet.....1/4-in. NPT
 Average Air Consumption..... 4 CFM
 Maximum operating pressure..... 90 PSI

USE ONLY POWER SOCKETS & ACCESSORIES

Sockets and accessories used shall be of the power socket type. Always check sockets, retainers and drives regularly for wear or damage and replace whenever necessary



Ref No.	Part No.	Description	Qty.	Ref No.	Part No.	Description	Qty.
1	9729201	Air Inlet	1	28	9729228	Spacer	1
2	9829202	O-Ring	1	30	9729230	Spindle Assembly	1
3	9729203	Throttle Valve Spring	1	31	9729231	Planet Gear	3
4	9729204	Throttle Valve Assembly	1	32	9729232	Ball Bearing	1
5	9729205	O-Ring	1	33	9729233	Ring Gear	1
6	9729206	Throttle Valve Seat	1	34	9729234	Coupling Nut	1
7	9729207	Spring Pin	1	35	9729235	Bushing Spacer	1
8	9729208	Motor Housing	1	35-1	9729235-1	Bushing	1
9	9729209	Air Regulator	1	36	9729236	Ratchet Housing Assembly	1
10	9729210	O-Ring	1	38	9729238	Crank Shaft	1
11	9729211	Spring Pin	1	39	9729239	Drive Bushing	1
12	9729212	Throttle Valve Stem	1	40	9729240	Ratchet Yoke	1
13	9729213	Spring Pin	1	41	9729241	Ratchet Housing Cover	1
14	9729214	Trigger	1	42	9729242	Reverse Knob Assembly	1
15	9729215	Spring Pin	1	43	9729243	Thrust Washer	1
16	9729216	O-Ring	1	44	9729244	Pawl Retaining Pin	2
17	9729217	Exhaust Deflector	1	45	9729245	Ratchet Anvil Assembly	1
18	9729218	End Cap	1	48	9729248	Ratchet Spring	2
19	9729219	Ball Bearing	1	49	9729249	Ratchet Lock Pin	2
20	9729220	Rear End Plate	1	50	9729250	Ratchet Pawl	2
21	9729221	Spring Pin	1	51	9729251	Wave Washer	1
22	9729222	Cylinder	1	52	9729252	Thrust Washer	1
23	9729223	Rotor	1	53	9729253	Retaining Ring	1
24	9729224	Rotor Blade	1	54	9729254	Housing Cover	1
25	9729225	O-Ring	1	55	9729255	Spring Pin	1
26	9729226	Front End Plate	1	64	9729264	Muffler Element	1
27	9729227	Ball Bearing	3				

Limited Warranty

Florida Pneumatic warrants its tools to be free from defects in material and workmanship for two years from the date of purchase. This warranty does not apply to tools which have been abused, misused, modified or repaired by someone other than Florida Pneumatic or its authorized service centers. If a Florida Pneumatic proves defective in material of workmanship within one year after purchase, return it to any authorized service center or to Florida Pneumatic, freight prepaid. Please enclose your name, address and adequate proof of purchase date with a brief description of the defect. Florida Pneumatic will, at its option, repair or replace defective tools, free of charge. Repairs or replacements are warranted as described above for the remainder of the warranty period. Florida Pneumatic's sole liability and your exclusive remedy under this warranty is limited to repair or replacement of the defective tool. There are no other warranties expressed or implied and Florida Pneumatic shall not be liable for incidental, consequential or special damages, or any other damages, costs or expense of repair or replacement as described above.