



PLEASE READ AND FOLLOW ALL WARNINGS



Universal Tool

UT8963AT-5

**PUSH TO START
AUTO SHUTOFF SCREWDRIVER**

Read Operating Instructions

Always become familiar with all the instructions and warnings before operating any power tool.



Always Wear Approved Eye Protection

Impact resistant eye protection should meet or exceed the standards as set forth in the United States ANSI Z87.1, Occupational and Educational Eye and Face Protection. Look for the marking Z87.1 on your eye protection to insure that it is an approved style. For further information, ANSI Z87.1, Occupational and Educational Eye and Face Protection, is available from the American National Standards Institute, Inc., 11 West 42nd Street, New York, NY 10036.



Hearing Protection is Recommended

Hearing protection should be used when the noise level exposure equals or exceeds an 8 hour time-weighted average sound level of 85 dBA. Process noise, reflective surfaces, other tools being operated nearby, all add to the noise level present in your work area. If you are unable to determine your noise level exposure, we recommend the use of hearing protection.



Avoid Prolonged Exposure to Vibration

Tools can vibrate during use. Prolonged exposure to vibration or very repetitive hand and arm movements, can cause injury. Stop using any tool if discomfort, tingling feeling or pain occurs. You should consult your physician before resuming use of the tool.



90 PSIG Maximum

This tool is designed to operate at

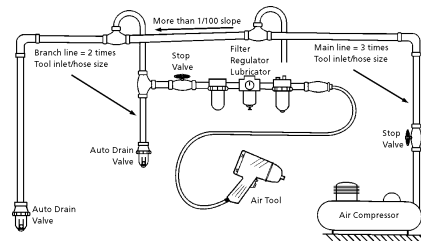
an air pressure of 90 pounds per square inch gauge pressure (90 PSIG) maximum, at the tool. Use of higher air pressure can, and may cause injury. Also, the use of higher air pressure places the internal components under loads and stresses they were not designed for, causing premature failure. The air supply should be clean and dry, preferably lubricated. For best results, drain the moisture from

WARNING:

Some dust created by power sanding, sawing, grinding, drilling, and other construction activities contains chemicals known to cause cancer, birth defects or reproductive harm. Some examples of these chemicals are:

- Lead from lead-based paints
- Crystalline silica from bricks, cement and other masonry products
- Arsenic and chromium from chemically treated lumber

Your risk from these exposures varies, depending on how often you do this type of work. To reduce your exposure to these chemicals, work in a well-ventilated area and work with approved safety equipment such as those dust masks that are specially designed to filter out microscopic particles.



Description

Universal Tool 1/4" QC screwdriver has an ergonomic handle design for reduced operator fatigue. Features a variable speed trigger and reverse for controlled operation. Ideal for general assembly and maintenance operation. The user now has the option of push to start operation by keeping the trigger depressed, or trigger start operation by depressing the trigger after the tool has been held against the fastener. Rotation of the fastener stops when the clutch reaches the set torque. Removing the tool from the fastener or releasing the trigger will reset the tool for the next cycle



Safety Instructions

The following instructions are furnished as general guidelines for use of your pneumatic tool. They cannot comprehensively cover all possible or conceivable uses of the subject tool. For additional information on the safe use of air tools, we advise you to obtain a copy of ANSI B186.1 Safety Code for Portable Air Tools, available from the following source:

American National Standards Institute, Inc.
11 West 42nd Street
New York, NY 10036.

The use of the word "shall" in the following instructions, indicates that adherence to the particular requirement is necessary to conform to ANSI B186.1.

Tool Application and Usage

Portable tools shall be used only for the purposes intended in their design and within the capacity for which they were intended and rated. It shall be the tool owner's and/or employer's responsibility to instruct each operator in the safe use of the tool. Tools shall not be used without guards and safety devices as furnished by the manufacturer. Where an air tool is modified or altered, the modifier shall

provide the safeguards to enable it to be safely used in the operations intended and to comply with any applicable provisions as contained in ANSI B186.1.

Tool Installation

Pressure regulators shall be used to limit air pressure to the rated pressure where the supply pressure exceeds the tool's rated pressure. Air hoses and lines shall be relieved of compressed air before being disconnected or disjointed, unless there is automatic valve closing protection at the joint being separated. Synthetic lubricants which can cause deterioration of elastomer seals shall not be used in air systems of air tools.

Tool Maintenance

It shall be the tool owner's and/or employer's responsibility to assure that tools are maintained in a safe operating condition. Tool maintenance and repair shall be performed by authorized, trained, competent personnel. Tools shall be disconnected from their compressed air supply before repairs are attempted. Repairs shall be consistent with the manufacturer's recommended procedures. Tool, hoses and fittings shall be replaced if unsuitable for safe operation. It shall be the tool owner's and/or employer's responsibility to keep required rating markings and warnings on the tool in legible condition.

Read these instructions carefully before attempting to install, operate or service this Florida Pneumatic product. Failure to comply with the instructions could result in personal injury and/or property damage! Retain these instructions for future reference.

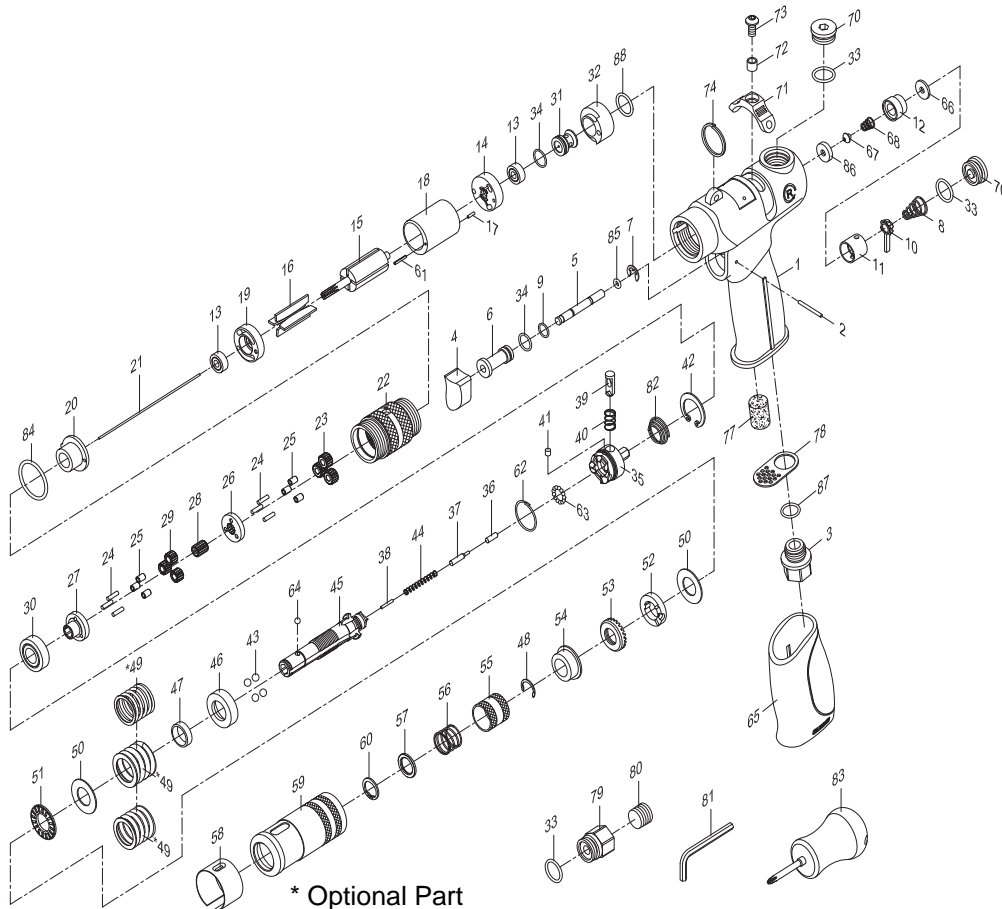
FPMC

Universal Tool
A Division of Florida Pneumatic Manufacturing Corporation
851 Jupiter Park Lane, Jupiter, Florida 33458
Toll Free 1-800-327-9403

Drive size1/4" QC
 Free speed (No load).....550 RPM
 Torque (green spring)5-19 in/lbs.
 Torque (black spring) 10-38 in/lbs.
 Torque (yellow spring) 15-45 in/lbs.
 Weight1.98 lbs.
 Overall length8.27"
 Average air consumption4 CFM
 Recommended hose size3/8" I.D.
 Air inlet1/4" NPT
 Maximum operating pressure90 psi

Clutch Adjustment

Clutches are adjusted through the slot provided in the clutch housing. The slot cover must be rotated to expose the adjustment slot. Rotate (fig.58) the clutch housing until the hole in the adjustment nut is visible. Insert a No.1 Phillips screwdriver and rotate in a clockwise direction to increase torque setting or in a counter clockwise direction to decrease the setting. After each adjustment, the slot cover should be rotated back to its locked position



* Optional Part

Replacement Parts for UT8963A T-5

Ref.	Description	Part #	Ref.	Description	Part #
1	Motor Housing	9AS00401	43	Steel Ball (4)	9000052
2	Spring Pin	920448	44	Spring	9000053
3	Air Inlet	9AS00503	45	Cam Spindle	9000054
4	Trigger	9AS00404	46	Cover	9000055
5	Valve Stem	9AS00405	47	Bushing	9000056
6	Valve Bushing	9AS00406	48	C-Ring	9000057
7	O-Ring	9AS00447	49	Spring (Yellow)	9000058
8	Valve Spring	9AS00408	49	Spring (Black)	9AS000149-12
9	O-Ring	9516114	49	Spring (Green)	9AS000149-13
10	Valve Stem	9AS00410	50	Thrust Race (2)	9000059
11	Valve Bushing	9AS00411	51	Roller Thrust Bearing	9000060
12	Shut-Off Valve Bushing	9AS00412	52	Adjustment Lock Ring	9000061
13	Ball Bearing (2)	9000022	53	Adjustment Nut	9000062
14	End Plate	9000023	54	Spindle Bushing	9000063
15	Rotor	9000024	55	Ball Retainer	9000064
16	Rotor Blades (4)	9000025	56	Spring	9000065
17	Spring Pin	9000026	57	Washer	9000066
18	Cylinder	9000027	58	Adjustment Cover	9000067
19	Front End Plate	9000028	59	Clutch Housing	9000068
20	Motor Spacer	9000029	60	Retaining Ring	9000069
21	Push Needle	9000030	61	Spring Pin	9000070
22	Internal Gear	9000031	62	Retainer Ring	9000071
23	Planet Gear (3)	9000032	63	Steel Ball (13)	9000072
24	Pin (6)	9000033	64	Steel Ball	9000073
25	Bushing (6)	9000034	65	Rubber Grip	9AS00452
26	Reduction Spindle	9000035	66	Shut Off Valve Seat (2)	9AS00509
27	Work Spindle	9000036	67	Shut Off Valve	9AS00510
28	Center Gear	9000037	68	Shut Off Valve Spring	9AS00508
29	Planet Gear (3)	9000038	70	Valve Cap (2)	9AS00409
30	Ball Bearing	9000039	71	Reverse Valve Knob	9AS00421
31	Inlet Noose	9000040	72	Reverse Knob Spacer	9AS00433
32	Reverse Valve	9000041	73	Screw	9AS00432
33	O-Ring (4)	9000042	74	Ring	9000083
34,75	O-Ring (2)	9000043	77	Damping Material	9000086
35	Clutch	9000044	78	Exhaust Diffuser	9AS00407
36	Pin	9000045	79	Air Inlet	9AS00403
37	Reset Pin	9000046	80	Set Screw	910213
38	Pin	9000047	81	Hex Wrench	910020
39	Trip Slide	9000048	82	Spring	9000097
40	Spring	9000049	83	Screwdriver	9AS000163
41	Plug	9000050	84	O-Ring	952235
42	Internal Ring	9000051	85	O-Ring	9OR00200100
			86	Washer	9AS00427
			87	O-Ring	9OR01007105

Limited Warranty

Universal Tool warrants its tools to be free from defects in material and workmanship for one year from the date of purchase. This warranty does not apply to tools which have been abused, misused, modified or repaired by someone other than Universal Tool or its authorized service centers. If a Universal Tool proves defective in material of workmanship within one year after purchase, return it to any authorized service center or to Universal Tool, freight prepaid. Please enclose your name, address and adequate proof of purchase date with a brief description of the defect. Universal Tool will, at its option, repair or replace defective tools, free of charge. Repairs or replacements are warranted as described above for the remainder of the warranty period. Universal Tool's sole liability and your exclusive remedy under this warranty is limited to repair or replacement of the defective tool. There are no other warranties expressed or implied and Universal Tool shall not be liable for incidental, consequential or special damages, or any other damages, costs or expense of repair or replacement as described above.