



PLEASE READ AND FOLLOW ALL WARNINGS



Universal Tool

**PUSH TO START
AUTO SHUTOFF SCREWDRIVER**

UT8963

Read Operating Instructions

Always become familiar with all the instructions and warnings before operating any power tool.



Always Wear Approved Eye Protection

Impact resistant eye protection should meet or exceed the standards as set forth in the United States ANSI Z87.1, Occupational and Educational Eye and Face Protection. Look for the marking Z87.1 on your eye protection to insure that it is an approved style. For further information, ANSI Z87.1, Occupational and Educational Eye and Face Protection, is available from the American National Standards Institute, Inc., 11 West 42nd Street, New York, NY 10036.



Hearing Protection is Recommended

Hearing protection should be used when the noise level exposure equals or exceeds an 8 hour time-weighted average sound level of 85 dBA. Process noise, reflective surfaces, other tools being operated nearby, all add to the noise level present in your work area. If you are unable to determine your noise level exposure, we recommend the use of hearing protection.



Avoid Prolonged Exposure to Vibration

Tools can vibrate during use. Prolonged exposure to vibration or very repetitive hand and arm movements, can cause injury. Stop using any tool if discomfort, tingling feeling or pain occurs. You should consult your physician before resuming use of the tool.



90 PSIG Maximum

This tool is designed to operate at

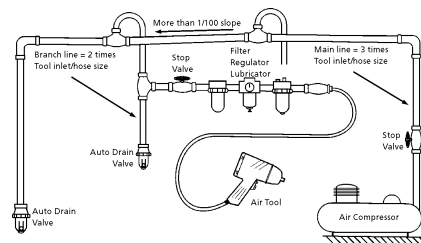
an air pressure of 90 pounds per square inch gauge pressure (90 PSIG) maximum, at the tool. Use of higher air pressure can, and may cause injury. Also, the use of higher air pressure places the internal components under loads and stresses they were not designed for, causing premature failure. The air supply should be clean and dry, preferably lubricated. For best results, drain the moisture from

WARNING:

Some dust created by power sanding, sawing, grinding, drilling, and other construction activities contains chemicals known to cause cancer, birth defects or reproductive harm. Some examples of these chemicals are:

- Lead from lead-based paints
- Crystalline silica from bricks, cement and other masonry products
- Arsenic and chromium from chemically treated lumber

Your risk from these exposures varies, depending on how often you do this type of work. To reduce your exposure to these chemicals, work in a well-ventilated area and work with approved safety equipment such as those dust masks that are specially designed to filter out microscopic particles.



Description

Universal Tool 1/4" QC screwdriver has an ergonomic handle design for reduced operator fatigue. Features a variable speed trigger and reverse for controlled operation. Ideal for general assembly and maintenance operation. The user now has the option of push to start operation by keeping the trigger depressed, or trigger start operation by depressing the trigger after the tool has been held against the fastener. Rotation of the fastener stops when the clutch reaches the set torque. Removing the tool from the fastener or releasing the trigger will reset the tool for the next cycle



Safety Instructions

The following instructions are furnished as general guidelines for use of your pneumatic tool. They cannot comprehensively cover all possible or conceivable uses of the subject tool. For additional information on the safe use of air tools, we advise you to obtain a copy of ANSI B186.1 Safety Code for Portable Air Tools, available from the following source:

American National Standards Institute, Inc.
11 West 42nd Street
New York, NY 10036.

The use of the word "shall" in the following instructions, indicates that adherence to the particular requirement is necessary to conform to ANSI B186.1.

Tool Application and Usage

Portable tools shall be used only for the purposes intended in their design and within the capacity for which they were intended and rated. It shall be the tool owner's and/or employer's responsibility to instruct each operator in the safe use of the tool. Tools shall not be used without guards and safety devices as furnished by the manufacturer. Where an air tool is modified or altered, the modifier shall

provide the safeguards to enable it to be safely used in the operations intended and to comply with any applicable provisions as contained in ANSI B186.1.

Tool Installation

Pressure regulators shall be used to limit air pressure to the rated pressure where the supply pressure exceeds the tool's rated pressure. Air hoses and lines shall be relieved of compressed air before being disconnected or disjointed, unless there is automatic valve closing protection at the joint being separated. Synthetic lubricants which can cause deterioration of elastomer seals shall not be used in air systems of air tools.

Tool Maintenance

It shall be the tool owner's and/or employer's responsibility to assure that tools are maintained in a safe operating condition. Tool maintenance and repair shall be performed by authorized, trained, competent personnel. Tools shall be disconnected from their compressed air supply before repairs are attempted. Repairs shall be consistent with the manufacturer's recommended procedures. Tool, hoses and fittings shall be replaced if unsuitable for safe operation. It shall be the tool owner's and/or employer's responsibility to keep required rating markings and warnings on the tool in legible condition.

Universal Tool
A Division of Florida Pneumatic Manufacturing Corporation
851 Jupiter Park Lane, Jupiter, Florida 33458
Toll Free 1-800-327-9403

Read these instructions carefully before attempting to install, operate or service this Florida Pneumatic product. Failure to comply with the instructions could result in personal injury and/or property damage! Retain these instructions for future reference.

FPMC

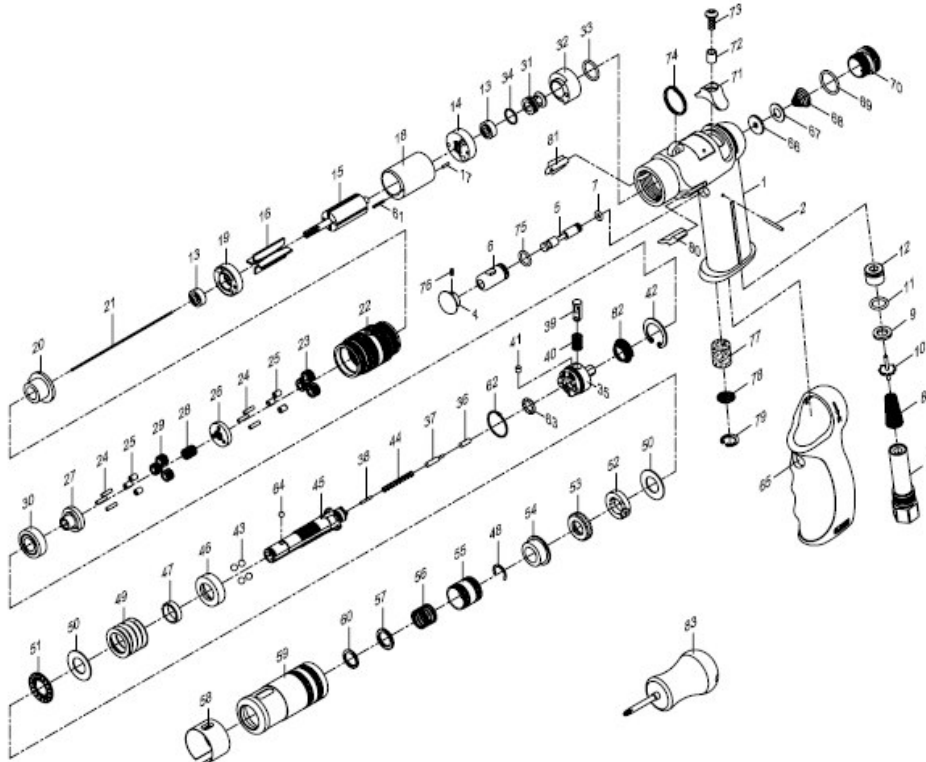
Drive size1/4" QC
 Free speed (No load).....500 RPM
 Torque (green spring)5-19 in/lbs.
 Torque (black spring) 10-38 in/lbs.
 Torque (yellow spring) 15-45 in/lbs.
 Weight1.98 lbs.
 Overall length8.27"
 Average air consumption4 CFM
 Recommended hose size3/8" I.D.
 Air inlet1/4" NPT
 Maximum operating pressure90 psi

Clutch Adjustment

Clutches are adjusted through the slot provided in the clutch housing. The slot cover must be rotated to expose the adjustment slot. Rotate (fig.58) the clutch housing until the hole in the adjustment nut is visible. Insert a No.1 Phillips screwdriver and rotate in a clockwise direction to increase torque setting or in a counter clockwise direction to decrease the setting. After each adjustment, the slot cover should be rotated back to its locked position

Parts Breakdown for UT8963
USE ONLY IMPACT SOCKETS & ACCESSORIES

Sockets and accessories used shall be of the impact socket type. Always check sockets, retainers and drives regularly for wear or damage and replace whenever necessary


Replacement Parts for UT8963

Ref.	Description	Part #	Ref.	Description	Part #
1	Motor Housing	9000091	43	Steel Ball (4)	9000052
2	Pin	9000092	44	Spring	9000053
3	Air Inlet	9000093	45	Cam Spindle	9000054
4	Trigger	9000094	46	Cover	9000055
5	Valve Stem	9000095	47	Bushing	9000056
6	Valve Bushing	9000096	48	C-Ring	9000057
7	O-Ring	9000016	49	Spring	9000058
8	Spring	9000017-1	50	Thrust Race (2)	9000059
9	Rubber Spacer	9000018	51	Roller Thrust Bearing	9000060
10	Valve Stem	9000019-1	52	Adjustment Lock Ring	9000061
11	O Ring	9000020	53	Adjustment Nut	9000062
12	Valve	9000021	54	Spindle Bushing	9000063
13	Ball Bearing (2)	9000022	55	Ball Retainer	9000064
14	End Plate	9000023	56	Spring	9000065
15	Rotor	9000024	57	Washer	9000066
16	Rotor Blades (4)	9000025	58	Adjustment Cover	9000067
17	Spring Pin	9000026	59	Clutch Housing	9000068
18	Cylinder	9000027	60	Retaining Ring	9000069
19	Front End Plate	9000028	61	Spring Pin	9000070
20	Motor Spacer	9000029	62	Retainer Ring	9000071
21	Push Needle	9000030	63	Steel Ball (13)	9000072
22	Internal Gear (3)	9000031	64	Steel Ball	9000073
23	Planet Gear (6)	9000032	65	Rubber Grip	9000074
24	Pin (6)	9000033	66	Shut Off Valve Seat	9000075
25	Bushing (6)	9000034	67	Shut Off Valve	9000076
26	Reduction Spindle	9000035	68	Shut Off Valve Spring	9000077
27	Work Spindle	9000036	69	O-Ring	9000078
28	Center Gear	9000037	70	Valve Cap	9000079
29	Planet Gear (3)	9000038	71	Reverse Valve Knob	9000080
30	Ball Bearing	9000039	72	Reverse Knob Spacer	9000081
31	Inlet Noose	9000040	73	Screw	9000082
32	reverse Valve	9000041	74	Ring	9000083
33	O-Ring	9000042	75	O-Ring	9000084
34	O-Ring	9000043	76	Set Screw	9000085
35	Clutch	9000044	77	Damping Material	9000086
36	Pin	9000045	78	Filter Net	9000087
37	Reset Pin	9000046	79	Internal Ring	9000088
38	Pin	9000047	80	Rubber Shield	9000089
39	Pin	9000048	81	Rubber Shield	9000090
40	Spring	9000049	82	Spring	9000097
41	Plug	9000050	83	Screwdriver (1)	9AS00163
42	Internal Ring	9000051			

Limited Warranty

Universal Tool warrants its tools to be free from defects in material and workmanship for one year from the date of purchase. This warranty does not apply to tools which have been abused, misused, modified or repaired by someone other than Universal Tool or its authorized service centers. If a Universal Tool proves defective in material of workmanship within one year after purchase, return it to any authorized service center or to Universal Tool, freight prepaid. Please enclose your name, address and adequate proof of purchase date with a brief description of the defect. Universal Tool will, at its option, repair or replace defective tools, free of charge. Repairs or replacements are warranted as described above for the remainder of the warranty period. Universal Tool's sole liability and your exclusive remedy under this warranty is limited to repair or replacement of the defective tool. There are no other warranties expressed or implied and Universal Tool shall not be liable for incidental, consequential or special damages, or any other damages, costs or expense of repair or replacement as described above.