

PLEASE READ AND FOLLOW ALL WARNINGS



UT8850

1/2" AIR DRILL

Read Operating Instructions

Always become familiar with all the instructions and warnings before operating any power tool.



Always Wear Approved Eye Protection

Impact resistant eye protection should meet or exceed the standards as set forth in the United States ANSI Z87.1, Occupational and Educational Eye and Face Protection. Look for the marking Z87.1 on your eye protection to insure that it is an approved style. For further information, ANSI Z87.1, Occupational and Educational Eye and Face Protection, is available from the American National Standards Institute, Inc., 11 West 42nd Street, New York, NY 10036.



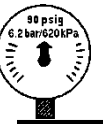
Hearing Protection is Recommended

Hearing protection should be used when the noise level exposure equals or exceeds an 8 hour time-weighted average sound level of 85 dBA. Process noise, reflective surfaces, other tools being operated nearby, all add to the noise level present in your work area. If you are unable to determine your noise level exposure, we recommend the use of hearing protection.



Avoid Prolonged Exposure to Vibration

Tools can vibrate during use. Prolonged exposure to vibration or very repetitive hand and arm movements, can cause injury. Stop using any tool if discomfort, tingling feeling or pain occurs. You should consult your physician before resuming use of the tool.



90 PSIG Maximum

This tool is designed to operate at

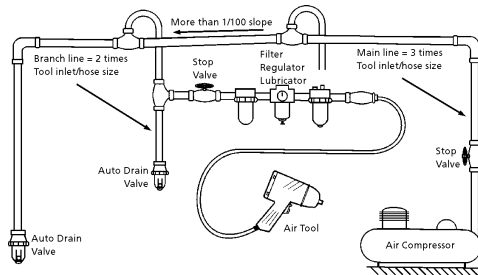
An air pressure of 90 pounds per square inch gauge pressure (90 PSIG) maximum, at the tool. Use of higher air pressure can, and may cause injury. Also, the use of higher air pressure places the internal components under loads and stresses they were not designed for, causing premature failure. The air supply should be clean and dry, preferably lubricated. For best results, drain the moisture from your compressor daily.

WARNING:

Some dust created by power sanding, sawing, grinding, drilling, and other construction activities contains chemicals known to cause cancer, birth defects or reproductive harm. Some examples of these chemicals are:

- Lead from lead-based paints
- Crystalline silica from bricks, cement and other masonry products
- Arsenic and chromium from chemically treated lumber

Your risk from these exposures varies, depending on how often you do this type of work. To reduce your exposure to these chemicals, work in a well-ventilated area and work with approved safety equipment such as those dust masks that are specially designed to filter out microscopic particles.



Description

Universal Tool 1/2" air drill is designed for heavy duty applications, such as honing, reaming and drilling. This tool features heavy duty planetary gearing and all ball bearing construction for long life. It has an excellent power-to-weight ratio, making it compact and powerful. Includes an auxillary handle for more control and operator comfort.



devices as furnished by the manufacturer. Where an air tool is modified or altered, the modifier shall provide the safeguards to enable it to be safely used in the operations intended and to comply with any applicable provisions as contained in ANSI B186.1.

Safety Instructions

The following instructions are furnished as general guidelines for use of your pneumatic tool. They cannot comprehensively cover all possible or conceivable uses of the subject tool. For additional information on the safe use of air tools, we advise you to obtain a copy of ANSI B186.1 Safety Code for Portable Air Tools, available from the following source:

American National Standards Institute, Inc.
11 West 42nd Street
New York, NY 10036.

The use of the word "shall" in the following instructions, indicates that adherence to the particular requirement is necessary to conform to ANSI B186.1.

Tool Application and Usage

Portable tools shall be used only for the purposes intended in their design and within the capacity for which they were intended and rated. It shall be the tool owner's and/or employer's responsibility to instruct each operator in the safe use of the tool. Tools shall not be used without guards and safety

Tool Installation

Pressure regulators shall be used to limit air pressure to the rated pressure where the supply pressure exceeds the tool's rated pressure. Air hoses and lines shall be relieved of compressed air before being disconnected or disjoined, unless there is automatic valve closing protection at the joint being separated. Synthetic lubricants which can cause deterioration of elastomer seals shall not be used in air systems of air tools.

Tool Maintenance

It shall be the tool owner's and/or employer's responsibility to assure that tools are maintained in a safe operating condition. Tool maintenance and repair shall be performed by authorized, trained, competent personnel. Tools shall be disconnected from their compressed air supply before repairs are attempted. Repairs shall be consistent with the manufacturer's recommended procedures. Tool, hoses and fittings shall be replaced if unsuitable for safe operation. It shall be the tool owner's and/or employer's responsibility to keep required rating markings and warnings on the tool in legible condition.

Read these instructions carefully before attempting to install, operate or service this Universal Tool product. Failure to comply with the instructions could result in personal injury and/or property damage! Retain these instructions for future reference.

FPMC

PL-0404

Universal Tool Air Tools

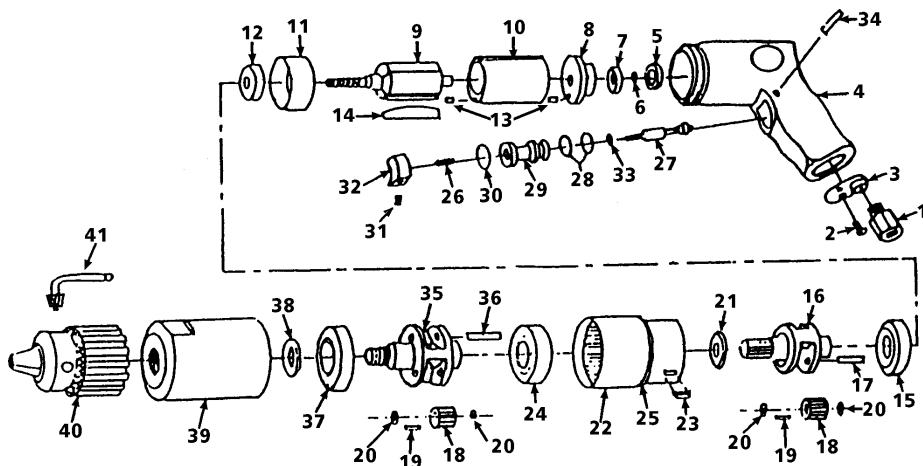
A Division of Universal Tool Manufacturing Corporation

851 Jupiter Park Lane, Jupiter, Florida 33458

Rev. 12/01 (561) 744-9500 • Fax (561) 575-9134 • Toll Free 1-800-327-9403

Specifications

Chuck size.....	1/2"
Free speed.....	500 RPM
Spindle thread.....	3/8" -24
Weight.....	3 1/2 lbs.
Length.....	9"
Average air consumption.....	.6 CFM
Recommended hose size.....	3/8" I.D.
Air inlet size.....	1/4" NPT
Maximum air pressure.....	90 PSI

Parts Breakdown for UT8850

Replacement Parts for UT8850

Ref.	Description	Part #	Ref.	Description	Part #
1	Air intake bushing	8731920	24	•Ball bearing	8729967
2	Screw (2)	8731921	25	O-ring	8729109
3	Muffler diffuser	8731922	26	Spring	8731925
4	Motor housing	8731923	27	Valve stem	8732064
5	Bearing cap	8729178	28	•O-ring (2)	8729091
6	Retaining ring	81012831	29	Valve bushing	8731927
7	•Ball bearing	8729012	30	•O-ring	8729073
8	Rear end plate	8729791	31	Setscrew	8731928
9	Rotor	8729958	32	Trigger	8731929
10	Cylinder	8732075	33	•O-ring	81008173
11	Front end plate	8729793	34	Pin	8732060
12	•Ball bearing	8729188	35	Planet cage	8729969
13	Pin (2)	8729707	36	Planet pin (3)	8729970
14	•Rotor blade (4)	8729709	37	•Ball bearing	81008262
15	•Ball bearing	8729210	38	•Seal	8729971
16	Planet cage	8729959	39	Nose housing	8729972
17	Planet pin (2)	8729960	40	1/2" Drill chuck w/key	5975
18	Planet gear (5)	8729961	41	Chuck key	5912
19	Roller/retainer set (5)	8729962	Δ	Clamp ring	8729973
20	Retainer (10)	8729963	Δ	Dead handle	8729974
21	Planet cage washer	8729964	Δ	Name plate screw	8729343
22	Internal gear	8729965	(Δ)	Not shown	
23	Key	8729966	(•)	Items recommended for tune up	

Universal Tool's Limited Warranty

Universal Tool warrants their tools to be free from defects in material and workmanship for one year from the date of purchase. This warranty does not apply to tools which have been abused, misused, modified or repaired by someone other than Universal Tool or their authorized service centers. If a Universal Tool tool proves defective in material or workmanship within one year after purchase, return it to any authorized service center or Universal Tool freight prepaid. Please enclose your name, address and adequate proof of purchase and a short description of the defect. Universal Tool will, at their option, repair or replace defective tools, free of charge. Repairs or replacements are warranted as described above for the remainder of the original warranty period. Universal Tool's sole liability and your exclusive remedy under this warranty is limited to repair or replacement of the defective tool. There are no other warranties expressed or implied and Universal Tool shall not be liable for incidental, consequential or special damages, or any other damages, costs or expense of repair or replacement as described above.

WARNING - Never use tool without proper eye protection.