



Description

Universal Tool reversible air drill features heavy duty planetary gearing for long life with ball bearing construction throughout. The trigger mounted reverse lever provides quick direction changes with through handle exhaust to reduce noise levels. This tool has an excellent power-to-weight ratio and comes equipped with a Jacobs® chuck. Contoured polyurethane grip reduces vibration to the operator.



PLEASE READ AND FOLLOW ALL WARNINGS



Read Operating Instructions

Always become familiar with all the instructions and warnings before operating any pneumatic tool.

Always Wear Approved Eye Protection

Impact resistant eye protection should meet or exceed the standards as set forth in the United States ANSI Z87.1, Occupational and Educational Eye and Face Protection. Look for the marking Z87.1 on your eye protection to insure that it is an approved style. For further information, ANSI Z87.1, Occupational and Educational Eye and Face Protection, is available from the American National Standards Institute, Inc., 11 West 42nd Street, New York, NY 10036.



Hearing Protection is Recommended

Hearing protection should be used when the noise level exposure equals or exceeds an 8 hour time-weighted average sound level of 85dBA. Process noise, reflective surfaces, other tools being operated nearby, all add to the noise level present in your work area. If you are unable to determine your noise level exposure, we recommend the use of hearing protection.



Avoid Prolonged Exposure to Vibration

Pneumatic tools can vibrate during use. Prolonged exposure to vibration or very repetitive hand and arm movements, can cause injury. Stop using any tool if discomfort, tingling feeling or pain occurs. You should consult your physician before resuming use of the tool.



90 PSIG Maximum

This tool is designed to operate at an air pressure of 90 pounds per square inch gauge pressure (90 PSIG) maximum, at the tool. Use of higher air pressure can, and may cause injury. Also, the use of higher air pressure places the internal components under loads and stresses they were not designed for, causing premature tool failure. The air supply should be clean and dry, preferably lubricated. For best results, drain the moisture from your compressor daily.



Use Accessories Rated At or Above the Tool RPM Rating

Always disconnect tool from air supply before changing accessories. Never hold work in hands, lap or against other parts of the body. Secure all work with clamps or a vice so that both hands are free to operate tool. Keep proper footing at all times. Verify tool direction before starting. Do not change direction of tool while tool is running. Do not force tool, allow drill to work at designed pace.

Specifications

Free Speed	1,800 RPM
Chuck capacity.....	3/8"
Length.....	6.18"
Weight.....	2.2 bs.
Air inlet size.....	1/4" NPT
Recommended hose size.....	3/8" I.D.
Average air consumption.....	6 CFM
Maximum air pressure.....	90 PSI



Installation

The UT8836R is designed to operate with 90 PSIG. Lower pressure (below 90 PSIG) will reduce performance of the tool while higher air pressure (over 90 PSIG) raises the performance of the tool beyond its rated capacity and could cause serious damage to tool and operator. Always use clean dry air. Excessive moisture and dirt will greatly reduce the life of any air tool. We recommend the installation of an in-line filter-regulator-lubricator as close to the tool as possible. A 3/8" air hose is required up to a length of 8 ft. If more length is required, a 1/2" air hose should be connected to the 3/8" hose to ensure the tool has the necessary air supply. Be sure all hoses and fitting are the correct size and tightly secured.

Pre-Operation

After properly setting up the tool, air lines, air supply and work area, the tool is ready to use. For best results, before using tool, operators should take time to familiarize themselves with the feel and operation of the tool's design and features.

Before the tool is connected to the air supply, clear the air hose of accumulated dust and moisture. When removing a tool for service or changing accessories, make sure the tool is disconnected or air line is shut-off and drained of air. This will prevent the tool from operating if the throttle is accidentally engaged.

Lubricate tool regularly and properly. Always wear safety equipment during operation. Check condition of tool and accessories before each use.

⚠ Warning ⚠ - Never operate tool without inspecting and installing the proper accessories. Doing so may result in personal injury or damage to the tool. Use only accessories rated at or above RPM of tool.

⚠ Caution ⚠ - If the drill jams in the work, release throttle immediately. Disconnect the drill before removing bit and determine cause of trouble. Do not attempt to free the bit by starting and stopping the motor.

Operation

The reverse lever is located on the left side of the pistol grip handle. It is labeled as "F" for forward (tightening or drilling) and "R" for reverse (loosening or removing). Do not change direction while tool is running. Locate center of new hole by using a center punch. Place drill bit tip in punch mark. Hold drill square with work and start motor. Apply steady, even pressure. Do not force. Too much pressure can cause bit to break or overheat. Too little pressure will keep bit from cutting and cause it to overheat.

Reduce pressure just before bit cuts through the work. When bit has penetrated work and is spinning freely, take it from the work while the motor is running, then release throttle.

Lubrication

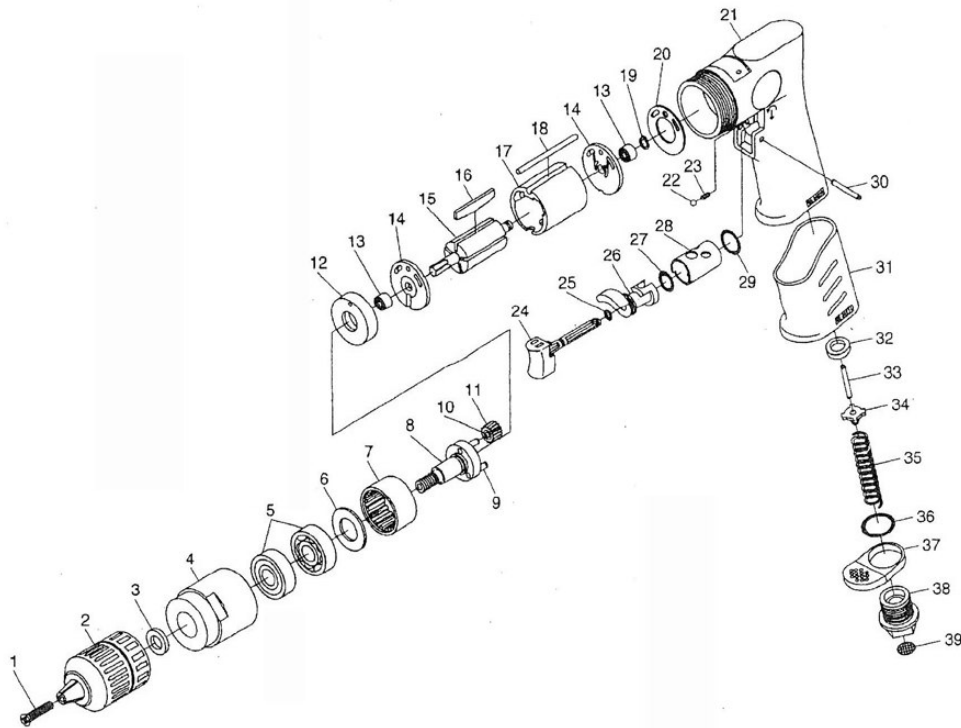
1. An automatic in-line filter-regulator-lubricator is recommended to increase tool life and keeps the tool operating properly. The in-line lubricator should be regularly checked and filled with Marvel air tool oil or equivalent. Proper adjustment of the in-line lubricator is performed by placing a sheet of paper next to the tool exhaust ports and holding the throttle open approximately 30 seconds. (The lubricator is properly set when a light stain of oil collects on the paper). Excessive amounts of oil should be avoided as it will decrease tool performance.
2. In the event that it becomes necessary to store the tool for an extended period of time (overnight, weekend, etc.), it should receive a generous amount of lubrication at that time. The tool should be run for approximately 30 seconds to ensure oil has been evenly distributed throughout the tool. The tool should be stored in a clean and dry environment.
3. Recommended lubricants:
Use Marvel Air Tool Oil or any other high grade turbine oil containing moisture absorbents, rust inhibitors, metal wetting agents and an EP (extreme pressure) additive.

WARNING:

Some dust created by power sanding, sawing, grinding, drilling, and other construction activities contains chemicals known to cause cancer, birth defects or reproductive harm. Some examples of these chemicals are:

- Lead from lead-based paints
- Crystalline silica from bricks, cement and other masonry products
- Arsenic and chromium from chemically treated lumber

Your risk from these exposures varies, depending on how often you do this type of work. To reduce your exposure to these chemicals, work in a well-ventilated area and work with approved safety equipment such as those dust masks that are specially designed to filter out microscopic particles.



Replacement Parts List for UT8836R 3/8" Heavy Duty Reversible Drill

Ref.	Description	Part #	Qty.	Ref.	Description	Part #	Qty.
1	Chuck Screw	8900100	1	20	Motor Gasket	8900113	1
2	Keyless Chuck	107975	1	21	Motor Housing	8900976	1
3	Chuck Spacer	8730229	1	22	Steel Ball	81005164	1
4	Clamp Nut	8900098	1	23	Regulator Spring	8900949	1
5	Ball Bearing	8732081	2	24	Trigger Button	8900950	1
6	Seal Plate	8730231	1	25	O-Ring	8900951	1
7	Internal Gear	8732078	1	26	Reverse Lever	8900952	1
8	Spindle (incl. 9)	8900099	1	27	O-Ring	8900107	1
9	Idler Pin	8900202	3	28	Reverse Bushing	8900953	1
10	Idler Bushing	8900203	3	29	O-Ring	8900110	1
11	Idler Gear (incl. 10)	8732079	3	30	Roll Pin	8732060	1
12	Spacer	8900101	1	31	Grip Cover	8900977	1
13	Ball Bearing	8729012	2	32	Valve Seat	8900955	1
14	End Plate	8900102	2	33	Valve Pin	8900956	1
15	Rotor	8900103	1	34	Valve	8900957	1
16	Rotor Blade	8732074	5	35	Valve Spring	8900958	1
17	Cylinder	8900104	1	36	O-Ring	8900959	1
18	Cylinder Pin	8900105	1	37	Deflector	8900960	1
19	Retaining Ring	8729180	1	38	Inlet Bushing (incl. 39)	8900961	1
				39	Screen	81005726	1



Limited Warranty

Universal Tool warrants its tools to be free from defects in material and workmanship for one year from the date of purchase. This warranty does not apply to tools which have been abused, misused, modified or repaired by someone other than Universal Tool or its authorized service centers. If a Universal Tool proves defective in material or workmanship within one year after purchase, return it to any authorized service center or to Universal Tool, freight prepaid. Please enclose your name, address and adequate proof of purchase date with a brief description of the defect. Universal Tool will, at its option, repair or replace defective tools, free of charge. Repairs or replacements are warranted as described above for the remainder of the warranty period. Universal Tool's sole liability and your exclusive remedy under this warranty is limited to repair or replacement of the defective tool. There are no other warranties expressed or implied and Universal Tool shall not be liable for incidental, consequential or special damages, or any other damages, costs or expense of repair or replacement as described above.

Trouble Shooting

Tool failure, loss of power or erratic action may be caused by factors outside the tool. Make the following checks:

1. Check air pressure. For rated performance, 90 PSIG air pressure is required AT THE TOOL with tool operating. A drop in air pressure may be caused by lowered compressor output, excessive drain on the air line or use of hose or connections of improper size (or in poor condition).
2. Check for wet or dirty air in system. Wet air tends to wash lubricant away from tool and may rust and corrode the components. Dirt and foreign matter in the air supply will impede action of the tool and cause damage to the internal mechanisms. If dirt or water has entered the tool, flush with Marvel air tool oil or equivalent.

Recommended Air Line Set-Up

