

**PLEASE READ AND FOLLOW ALL WARNINGS**

**Universal Tool**

**MODEL NO. UT8767-23  
7" VERTICAL GRINDER**

### Read Operating Instructions

Always become familiar with all the instructions and warnings before operating any power tool.



### Always Wear Approved Eye Protection

Impact resistant eye protection should meet or exceed the standards as set forth in the United States ANSI Z87.1, Occupational and Educational Eye and Face Protection. Look for the marking Z87.1 on your eye protection to insure that it is an approved style. For further information, ANSI Z87.1, Occupational and Educational Eye and Face Protection, is available from the American National Standards Institute, Inc., 11 West 42nd Street, New York, NY 10036.



### Hearing Protection is Recommended

Hearing protection should be used when the noise level exposure equals or exceeds an 8 hour time-weighted average sound level of 85 dBA. Process noise, reflective surfaces, other tools being operated nearby, all add to the noise level present in your work area. If you are unable to determine your noise level exposure, we recommend the use of hearing protection.



### Avoid Prolonged Exposure to Vibration

Pneumatic Tools can vibrate during use. Prolonged exposure to vibration or very repetitive hand and arm movements, can cause injury. Stop using any tool if discomfort, tingling feeling or pain occurs. You should consult your physician before resuming use of the tool.



### 90 PSIG Maximum

This tool is designed to operate at an air pressure of 90 pounds per square inch gauge pressure (90 PSIG) maximum, at the tool. Use of higher air pressure can, and may cause injury. Also, the use of higher air pressure places the internal components under loads and stresses they were not designed for, causing premature



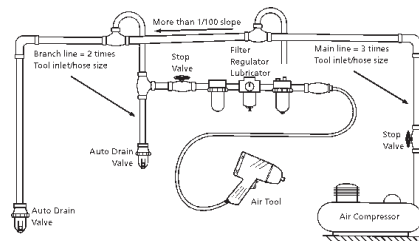
**Always use accessories with an RPM rating that meets or exceeds the tool RPM rating.**

### WARNING:

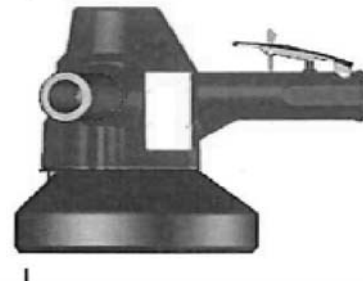
Some dust created by power sanding, sawing, grinding, drilling, and other construction activities contains chemicals known to cause cancer, birth defects or reproductive harm. Some examples of these chemicals are:

- Lead from lead-based paints
- Crystalline silica from bricks, cement and other masonry products
- Arsenic and chromium from chemically treated lumber

Your risk from these exposures varies, depending on how often you do this type of work. To reduce your exposure to these chemicals, work in a well-ventilated area and work with approved safety equipment such as those dust masks that are specially designed to filter out microscopic particles.



**Features:** 2.3 HP Motor prevents stall under load. Safety lock-off throttle. Governor controlled to maintain speed for optimum material removal. Double bearing spindle design for durability. Built-in exhaust silencer system. Best for continuous heavy duty grinding.



intended and rated. It shall be the tool owner's and/or employer's responsibility to instruct each operator in the safe use of the tool. Tools shall not be used without guards and safety devices as furnished by the manufacturer. Where an air tool is modified or altered, the modifier shall provide the safeguards to enable it to be safely used in the operations intended and to comply with any applicable provisions as contained in ANSI B186.1.

### Tool Installation

Pressure regulators shall be used to limit air pressure to the rated pressure where the supply pressure exceeds the tool's rated pressure. Air hoses and lines shall be relieved of compressed air before being disconnected or disjointed, unless there is automatic valve closing protection at the joint being separated. Synthetic lubricants which can cause deterioration of elastomer seals shall not be used in air systems of air tools.

### Safety Instructions

The following instructions are furnished as general guidelines for use of your pneumatic tool. They cannot comprehensively cover all possible or conceivable uses of the subject tool. For additional information on the safe use of air tools, we advise you to obtain a copy of ANSI B186.1 Safety Code for Portable Air Tools, available from the following source:

American National Standards Institute, Inc.  
11 West 42nd Street  
New York, NY 10036.

The use of the word "shall" in the following instructions, indicates that adherence to the particular requirement is necessary to conform to ANSI B186.1.

### Tool Application and Usage

Pneumatic tools shall be used only for the purposes intended in their design and within the capacity for which they were

### Tool Maintenance

It shall be the tool owner's and/or employer's responsibility to assure that tools are maintained in a safe operating condition. Tool maintenance and repair shall be performed by authorized, trained, competent personnel. Tools shall be disconnected from their compressed air supply before repairs are attempted. Repairs shall be consistent with the manufacturer's recommended procedures. Tool, hoses and fittings shall be replaced if unsuitable for safe operation. It shall be the tool owner's and/or employer's responsibility to keep required rating markings and warnings on the tool in legible condition.

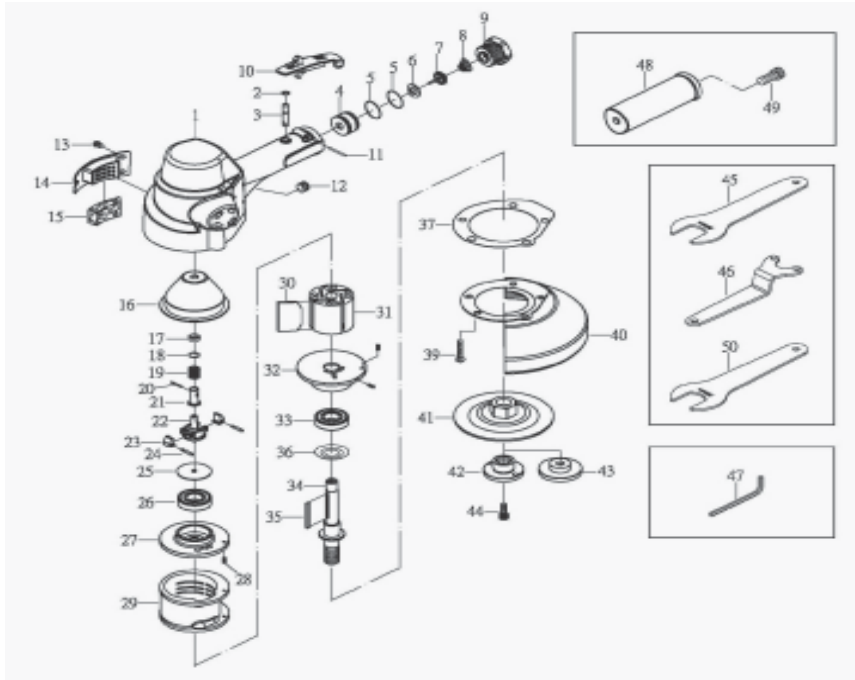
Universal Tool  
A Division of Florida Pneumatic Manufacturing Corporation  
851 Jupiter Park Lane, Jupiter, Florida 33458  
Toll Free 1-800-327-9403

Read these instructions carefully before attempting to install, operate or service this Florida Pneumatic product. Failure to comply with the instructions could result in personal injury and/or property damage! Retain these instructions for future reference.

**FPMC**

**Specifications:**

Motor HP .....	2.3
Max. Wheel Diameter .....	7" Type 27
Exhaust .....	Side
Spindle Size .....	5/8" - 11
RPM .....	7,000
Weight .....	7.2 lbs
Length .....	7.14"
Air Inlet .....	1/2" NPT
Rec Hose .....	1/2"

**Parts Breakdown**

**Limited Warranty**

Universal Tool warrants its tools to be free from defects in material and workmanship for one year from the date of purchase. This warranty does not apply to tools which have been abused, misused, modified or repaired by someone other than Universal Tool or its authorized service centers. If a Universal Tool proves defective in material of workmanship within one year after purchase, return it to any authorized service center or to Universal Tool, freight prepaid. Please enclose your name, address and adequate proof of purchase date with a brief description of the defect. Universal Tool will, at its option, repair or replace defective tools, free of charge. Repairs or replacements are warranted as described above for the remainder of the warranty period. Universal Tool's sole liability and your exclusive remedy under this warranty is limited to repair or replacement of the defective tool. There are no other warranties expressed or implied and Universal Tool shall not be liable for incidental, consequential or special damages, or any other damages, costs or expense of repair or replacement as described above.

**Replacement Parts**

REF	PART NO.	DESCRIPTION	QTY	REF	PART NO.	DESCRIPTION	QTY
1	988001	HOUSING	1	26	987029	BEARING(6201ZZ)	1
2	90B-04	O-RING(3.5X1.4)	1	27	988027	REAR PLATE	1
3	988003	VALVE STEM	1	28	981326	PIN (3*8L)	3
4	988004	BUSHING	1	29	988029	CYLINDER	1
5	988005	O-RING	2	30	988030A	ROTOR BLADE	6
6	988006	WASHER	1	31	988031A	ROTOR	1
7	987008	VALVE	1	32	988032	FRONT PLATE	1
8	988008	SPRING	1	33	988033	BEARING (6003ZZ)	2
9	988009	INLET BUSHING	1	34	988034	MOTOR SHAFT BALANCER	1
10	988010	LEVER	1	35	988035	KEY	1
11	970432	PIN	1	36	988036	WASHER	1
12	988012	SCREW	1	37	988037	WASHER	1
13	980528	SCREW (M5X6)	3	39	988039	SCREW (M6X20L)	5
14	988014	EXHAUST BAFFLE	1	40	988040	DISC COVER (7")	1
15	988015	NOISE ELIMINATION POLY FIBER	1	41	988041	FACE PLATE	1
16	988016A	COVER	1	42	988042	DISC NUT	1
17	987020	SPRING HOLDER	1	43	988043	DISC NUT	1
18	987021	WASHER(14*9.5*0.5T)	1	44	988044	SCREW	1
19	987022	SPRING(9.7*1.2T*16.5)	1	45	988045	STOP SPANNER (25mm)	1
20	987024	PIN(2*11.8L)	1	46	987057	DISC SPANNER	1
21	987023	GOVERNOR VALVE	1	47	960929	HEX (5MM)	1
22	987027	GOVERNOR CAGE	1	48	988048	HANDLE	1
23	987025	GOVERNOR WEIGHT	2	49	988049	SCREW (M10X20L)	1
24	987026	GOVERNOR PIN	2	50	987056	STOP SPANNER (19mm)	1
25	987028	WASHER	1				

**⚠WARNING**

*This tool is not suitable for use with Type 1, Type 41 and Type 42 cut off wheels. Do not fit Type 1 or Type 41 or Type 42 wheels to this tool. Using Type 1, Type 41 and Type 42 wheels with this tool can cause serious injury.*

**WARNING:**

**Use of threaded hub grinding wheels:**

This tool features a 5/8" x 11 TPI unified spindle thread for mounting grinding wheels, along with ANSI standard mounting flanges designed for mounting type 27 grinding wheels. The use of 5/8" x 11 TPI threaded hub grinding wheels as alternatives to type 27 grinding wheels has become more common. If you intend using threaded hub grinding wheels with this grinder; the following procedures must be followed at all times:

Before conducting any of the procedures below the grinder must be disconnected from the air supply.

- 1) The rear wheel mounting flange must be removed from the grinder before use.
- 2) Once the threaded hub wheel is fitted it must be securely tightened by holding the spindle of the grinder with the wrench provided, while tightening the wheel clockwise with a second wrench placed on the hexagon section at the rear face of the wheel. It is also recommended that for the first operation after fitting the wheel; that the wheel is held firmly on the work surface prior to starting the grinder.
- 3) Only use threaded hub wheels certified by the manufacturer to meet ANSI B7.1 standards. Failure to follow the procedures above can cause injury or death, as deceleration of the grinder may cause the wheel to fly-off; in addition the wheel will not be properly enclosed within the ANSI standard guard supplied with the grinder.