



PLEASE READ AND FOLLOW ALL WARNINGS



Universal Tool

UT8749

Heavy Duty

Extended Angle Grinder

Read Operating Instructions

Always become familiar with all the instructions and warnings before operating any power tool.



Always Wear Approved Eye Protection

Impact resistant eye protection should meet or exceed the standards as set forth in the United States ANSI Z87.1, Occupational and Educational Eye and Face Protection. Look for the marking Z87.1 on your eye protection to insure that it is an approved style. For further information, ANSI Z87.1, Occupational and Educational Eye and Face Protection, is available from the American National Standards Institute, Inc., 11 West 42nd Street, New York, NY 10036.



Hearing Protection is Recommended

Hearing protection should be used when the noise level exposure equals or exceeds an 8 hour time-weighted average sound level of 85 dBA. Process noise, reflective surfaces, other tools being operated nearby, all add to the noise level present in your work area. If you are unable to determine your noise level exposure, we recommend the use of hearing protection.



Avoid Prolonged Exposure to Vibration

Tools can vibrate during use. Prolonged exposure to vibration or very repetitive hand and arm movements, can cause injury. Stop using any tool if discomfort, tingling feeling or pain occurs. You should consult your physician before resuming use of the tool.



90 PSIG Maximum

This tool is designed to operate at

an air pressure of 90 pounds per square inch gauge pressure (90 PSIG) maximum, at the tool. Use of higher air pressure can, and may cause injury. Also, the use of higher air pressure places the internal components under loads and stresses they were not designed for, causing premature failure. The air supply should be clean and dry, preferably lubricated. For best results, drain the moisture from your compressor daily.

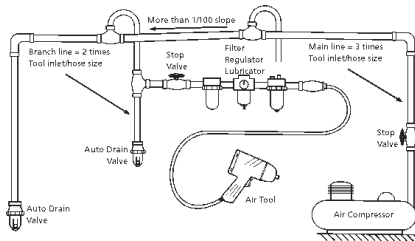
WARNING:

ONLY USE ACCESSORIES THAT ARE RATED TO RUN AT THE MAXIMUM SPEED (RPM) OR HIGHER.

Some dust created by power sanding, sawing, grinding, drilling, and other construction activities contains chemicals known to cause cancer, birth defects or reproductive harm. Some examples of these chemicals are:

- Lead from lead-based paints
- Crystalline silica from bricks, cement and other masonry products
- Arsenic and chromium from chemically treated lumber

Your risk from these exposures varies, depending on how often you do this type of work. To reduce your exposure to these chemicals, work in a well-ventilated area and work with approved safety equipment such as those dust masks that are specially designed to filter out microscopic particles.



Description

Features a heavy duty steel spiral gears; 1.0 HP motor, insulated composite grip which reduces weight and operator fatigue. Single piece motor-angle head housing adds durability. Steel ANSI standard guard, with patented swivel design. Safety lock-off throttle.



Safety Instructions

The following instructions are furnished as general guidelines for use of your pneumatic tool. They cannot comprehensively cover all possible or conceivable uses of the subject tool. For additional information on the safe use of air tools, we advise you to obtain a copy of ANSI B186.1 Safety Code for Portable Air Tools, available from the following source:

American National Standards Institute, Inc.
11 West 42nd Street
New York, NY 10036.

The use of the word "shall" in the following instructions, indicates that adherence to the particular requirement is necessary to conform to ANSI B186.1.

Tool Application and Usage

Portable tools shall be used only for the purposes intended in their design and within the capacity for which they were intended and rated. It shall be the tool owner's and/or employer's responsibility to instruct each operator in the safe use of the tool. Tools shall not be used without guards and safety

devices as furnished by the manufacturer. Where an air tool is modified or altered, the modifier shall provide the safeguards to enable it to be safely used in the operations intended and to comply with any applicable provisions as contained in ANSI B186.1.

Tool Installation

Pressure regulators shall be used to limit air pressure to the rated pressure where the supply pressure exceeds the tool's rated pressure. Air hoses and lines shall be relieved of compressed air before being disconnected or disjointed, unless there is automatic valve closing protection at the joint being separated. Synthetic lubricants which can cause deterioration of elastomer seals shall not be used in air systems of air tools.

Tool Maintenance

It shall be the tool owner's and/or employer's responsibility to assure that tools are maintained in a safe operating condition. Tool maintenance and repair shall be performed by authorized, trained, competent personnel. Tools shall be disconnected from their compressed air supply before repairs are attempted. Repairs shall be consistent with the manufacturer's recommended procedures. Tool, hoses and fittings shall be replaced if unsuitable for safe operation. It shall be the tool owner's and/or employer's responsibility to keep required rating markings and warnings on the tool in legible condition.

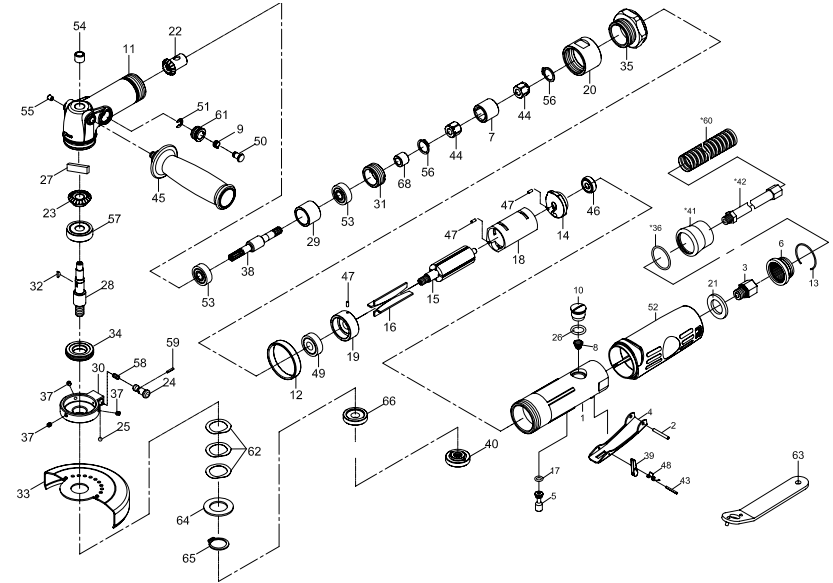
Universal Tool
A Division of Florida Pneumatic Manufacturing Corporation
851 Jupiter Park Lane, Jupiter, Florida 33458
Toll Free 1-800-327-9403

Read these instructions carefully before attempting to install, operate or service this Florida Pneumatic product. Failure to comply with the instructions could result in personal injury and/or property damage! Retain these instructions for future reference.

FPMC

Specifications

Horsepower	1.0 HP
Max Wheel Size	4" Type 1
Spindle size	3/8"-24
Free speed	12,000 RPM
Weight	4.0 lbs.
Length	11"
Average air consumption	5 CFM
Recommended hose size	3/8" I.D.
Air inlet	1/4" NPT
Maximum air pressure	90 psi


Limited Warranty

Universal Tool warrants its tools to be free from defects in material and workmanship for one year from the date of purchase. This warranty does not apply to tools which have been abused, misused, modified or repaired by someone other than Universal Tool or its authorized service centers. If a Universal Tool proves defective in material or workmanship within one year after purchase, return it to any authorized service center or to Universal Tool, freight prepaid. Please enclose your name, address and adequate proof of purchase date with a brief description of the defect. Universal Tool will, at its option, repair or replace defective tools, free of charge. Repairs or replacements are warranted as described above for the remainder of the warranty period. Universal Tool's sole liability and your exclusive remedy under this warranty is limited to repair or replacement of the defective tool. There are no other warranties expressed or implied and Universal Tool shall not be liable for incidental, consequential or special damages, or any other damages, costs or expense of repair or replacement as described above.

Index No.	Parts No.	Description	Index No.	Parts No.	Description
1	95K-3051B01	Motor Housing	*36	970144	O-Ring (25.07x2.62)
2	930102	Spring Pin (3x24)	37	940304	Set Screw(3) (M5x5L)
3	951203	Air Inlet	38	95B-321138	Spindle
4	96K-301104	Throttle Lever	39	9522239	Safety Bar
5	96K-301105	Valve Shaft	40	95B-321140	Flange Nut
6	951206	Exhaust Diffuser	*41	970143	Clamp
7	95B-321107	Connector	*42	951239	Hose
8	951208	Valve Spring	43	951542	Spring Pin (2x18)
9	95B-321109	Spring	44	95B-321144	Nut (2)
10	951-3011A10	Plug	45	95B-321145	Side Handle
11	95B-321101	Front Housing	46	9030113	Ball Bearing (626zz)
12	95K-3011B12	Decoration Ring	47	972017	Spring Pin(3) (2.5x6)
13	951229	Retaining Ring	48	9522212	Spring
14	95K-3011B14	Rear End Plate	49	9051220	Ball Bearing (6000zz)
15	95B-321115	Rotor	50	95B-321150	Stop Button
16	95K-3011B16	Rotor Blade (4)	51	963047	Retaining Ring (ETW5)
17	970107	O-Ring (4.8x1.9)	52	9512253	Rubber Grip
18	95K-3011B18	Cylinder	53	9061020	Ball Bearing(2) (628zz)
19	95B-321119	Front End Plate	54	90BK0709	Needle Bearing (BK0709)
20	95B-321120	Connector Nut	55	956237	Oil Cap
21	951250	Muffler	56	9STW-15	Retaining Ring(2) (STW-15)
22	95B-321122	Bevel Gear	57	9073434	Ball Bearing (6200z)
23	95B-321123	Bevel Gear	58	95K-3011B08	Spring
24	95K-3011B24	Stop Button	59	972902	Spring Pin (2x10)
25	930143	Steel Ball (5/32")	*60	952238-1	Exhaust Hose
26	970123	O-Ring (11.8x2.4)	61	95B-321161	Button Seat
27	95B-321127	Felt Oiler	62	9WW20	Wave Washer(3) (WW-20)
28	95B-321128	Spindle	63	961954	Pin Wrench
29	95B-321129	Spacer	64	95K-3011B31	Washer
30	95B-321130	Cover Seat	65	9STW20	Retaining Ring (STW20)
31	95B-321131	Lock Nut	66	95B-321143	Flange
32	9654232	Key	68	95B-321112	Spacer
33	95B-321142	Disc Cover			
34	95B-321134	Luck Nut			
35	95B-321135	Clamp Nut			