



PLEASE READ AND FOLLOW ALL WARNINGS



Universal Tool

**UT8749-5
5-in. Grinder**

Read Operating Instructions

Always become familiar with all the instructions and warnings before operating any power tool.

Always Wear Approved Eye Protection

Impact resistant eye protection should meet or exceed the standards as set forth in the United States ANSI Z87.1, Occupational and Educational Eye and Face Protection. Look for the marking Z87.1 on your eye protection to insure that it is an approved style. For further information, ANSI Z87.1, Occupational and Educational Eye and Face Protection, is available from the American National Standards Institute, Inc., 11 West 42nd Street, New York, NY 10036.



Hearing Protection is Recommended

Hearing protection should be used when the noise level exposure equals or exceeds an 8 hour time-weighted average sound level of 85 dBA. Process noise, reflective surfaces, other tools being operated nearby, all add to the noise level present in your work area. If you are unable to determine your noise level exposure, we recommend the use of hearing protection.



Avoid Prolonged Exposure to Vibration

Tools can vibrate during use. Prolonged exposure to vibration or very repetitive hand and arm movements, can cause injury. Stop using any tool if discomfort, tingling feeling or pain occurs. You should consult your physician before resuming use of the tool.



90 PSIG Maximum

This tool is designed to operate at



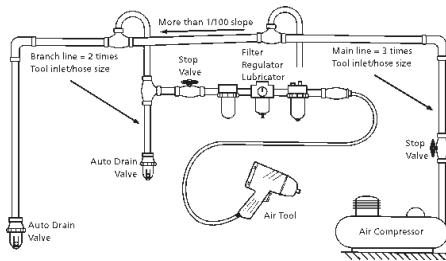
an air pressure of 90 pounds per square inch gauge pressure (90 PSIG) maximum, at the tool. Use of higher air pressure can, and may cause injury. Also, the use of higher air pressure places the internal components under loads and stresses they were not designed for, causing premature failure. The air supply should be clean and dry, preferably lubricated. For best results, drain the moisture from your compressor daily.

WARNING:

Some dust created by power sanding, sawing, grinding, drilling, and other construction activities contains chemicals known to cause cancer, birth defects or reproductive harm. Some examples of these chemicals are:

- Lead from lead-based paints
- Crystalline silica from bricks, cement and other masonry products
- Arsenic and chromium from chemically treated lumber

Your risk from these exposures varies, depending on how often you do this type of work. To reduce your exposure to these chemicals, work in a well-ventilated area and work with approved safety equipment such as those dust masks that are specially designed to filter out microscopic particles.



Heavy duty alloy steel spiral gears
1.0 HP motor for added stall resistance
Patented 260 degree swivel guard Increases maneuverability and access
Insulated composite grip; reduces weight and operator fatigue

Side handle distributes load on tool and increases control
Steel type 27 guard
Safety lock-off throttle.



Safety Instructions

The following instructions are furnished as general guidelines for use of your pneumatic tool. They cannot comprehensively cover all possible or conceivable uses of the subject tool. For additional information on the safe use of air tools, we advise you to obtain a copy of CAGI B186.1-2009 Safety Code for Portable Air Tools, available from the following source: COMPRESSED AIR AND GAS INSTITUTE 1300 Sumner Avenue Cleveland, OH 44115-2851 Ph: 216-241-7333 www.cagi.org OR from Florida Pneumatic Manufacturing Corp. 851 Jupiter Park Lane Jupiter, FL 33458 561-744-9500 www.florida-pneumatic.com The use of the word "shall" in the following instructions, indicates that adherence to the particular requirement is necessary to conform to CAGI B186.1-2009.

Tool Application and Usage

Portable tools shall be used only for the purposes intended in their design and within the capacity for which they were intended and rated. It shall be the tool owner's and/or employer's responsibility to instruct each operator in the safe use of the tool. Tools shall not be used without guards and safety

devices as furnished by the manufacturer. Where an air tool is modified or altered, the modifier shall provide the safeguards to enable it to be safely used in the operations intended and to comply with any applicable provisions as contained in CAGI B186.1-2009 .

Tool Installation

Pressure regulators shall be used to limit air pressure to the rated pressure where the supply pressure exceeds the tool's rated pressure. Air hoses and lines shall be relieved of compressed air before being disconnected or disjoined, unless there is automatic valve closing protection at the joint being separated. Synthetic lubricants which can cause deterioration of elastomer seals shall not be used in air systems of air tools.

Tool Maintenance

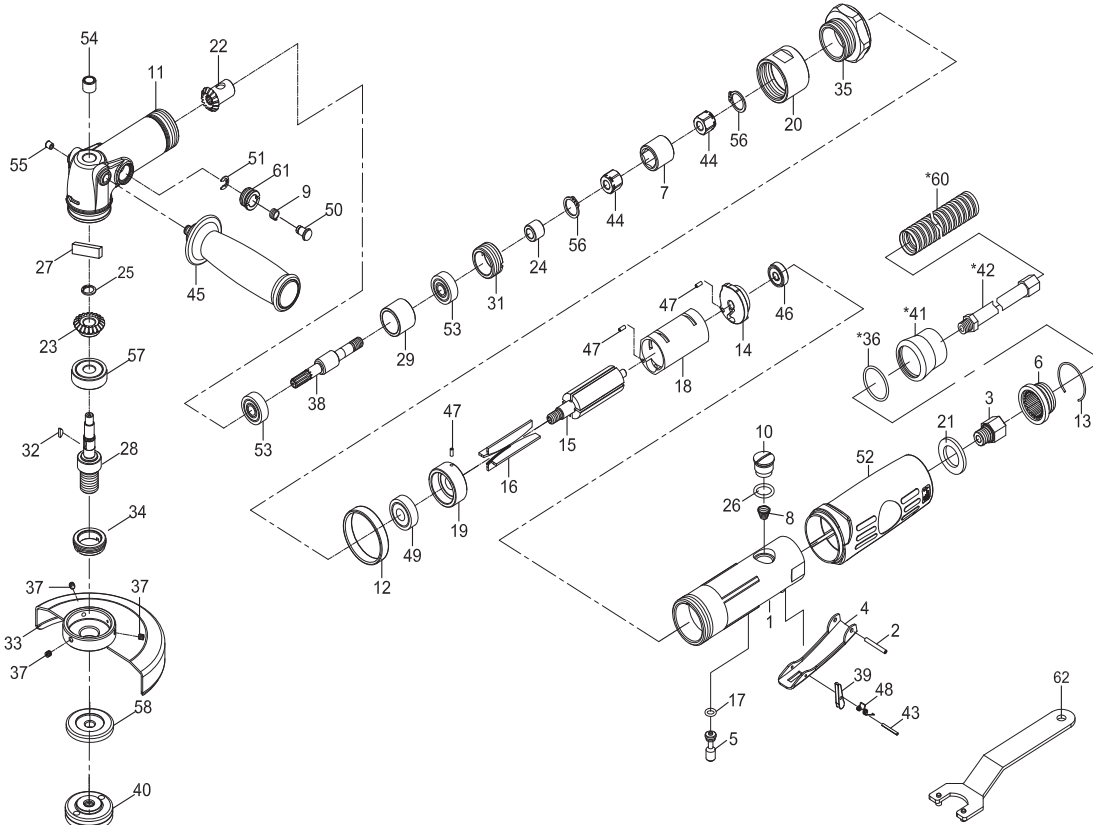
It shall be the tool owner's and/or employer's responsibility to assure that tools are maintained in a safe operating condition. Tool maintenance and repair shall be performed by authorized, trained, competent personnel. Tools shall be disconnected from their compressed air supply before repairs are attempted. Repairs shall be consistent with the manufacturer's recommended procedures. Tool, hoses and fittings shall be replaced if unsuitable for safe operation. It shall be the tool owner's and/or employer's responsibility to keep required rating markings and warnings on the tool in legible condition.

Universal Tool a Division of Florida Pneumatic Manufacturing Corporation
851 Jupiter Park Lane, Jupiter, Florida 33458
Toll Free 1-800-327-9403

Read these instructions carefully before attempting to install, operate or service this Florida Pneumatic product. Failure to comply with the instructions could result in personal injury and/or property damage! Retain these instructions for future reference.



Model	Free Speed	Spindle	Max.	Motor	Weight	Length	Inlet	Rec. Hose	Rec. Air	Air Con
Number	(RPM)	Wheel	HP	(lbs)	(In.)	(NPT)	Size	Pressure	CFM	
UT8749-5	12,000	5/8" x 11	5"	1.0	4.0	11.0	1/4"	3/8" I.D.	90 psi	5


WARNING: Use of threaded hub grinding wheels:

This tool features a 5/8" x 11 TPI unified spindle thread for mounting grinding wheels, along with ANSI standard mounting flanges designed for mounting type 27 grinding wheels. The use of 5/8" x 11 TPI threaded hub grinding wheels as alternatives to type 27 grinding wheels has become more common. If you intend using threaded hub grinding wheels with this grinder; the following procedures must be followed at all times:

Before conducting any of the procedures below the grinder must be disconnected from the air supply.

- 1) The rear wheel mounting flange must be removed from the grinder before use.
- 2) Once the threaded hub wheel is fitted it must be securely tightened by holding the spindle of the grinder with the wrench provided, while tightening the wheel clockwise with a second wrench placed on the hexagon section at the rear face of the wheel. It is also recommended that for the first operation after fitting the wheel; that the wheel is held firmly on the work surface prior to starting the grinder.
- 3) Only use threaded hub wheels certified by the manufacturer to meet ANSI B7.1 standards.

Failure to follow the procedures above can cause injury or death, as deceleration of the grinder may cause the wheel to fly-off; in addition the wheel will not be properly enclosed within the ANSI standard guard supplied with the grinder.

Ref. #	Part No.	Description	Qty.	Ref. #	Part No.	Description	Qty.
1	95K-3051B01	Motor Housing	1	32	9654232	Key	1
2	930102	Spring Pin	1	33	95D-327231	Disc Cover	1
3	951203	Air Inlet	1	34	95D-327234	Lock Nut	1
4	96K-301104	Throttle Lever	1	35	95B-321135	Clamp Nut	1
5	96K-301105	Valve Shaft	1	*36	970144	O-Ring	1
6	951206	Exhaust Diffuser	1	37	940304	Set Screw	3
7	95B-3271107	Connector	1	38	95B-321138	Spindle	1
8	951208	Valve Spring	1	39	9522239	Safety Bar	1
9	95B-321109	Spring	1	40	95D-619244	Flange Nut	1
10	951-3011A10	Plug	1	*41	970143	Clamp	1
11	95B-321101	Front Housing	1	*42	951239	Hose	1
12	95K-3011B12	Decoration Ring	1	43	951542	Spring Pin	1
13	951229	Retaining Ring	1	44	95B-321144	Nut	2
14	95K-3011B14	Rear End Plate	1	45	95B-321145	Side Handle	1
15	95B-321115	Rotor	1	46	9030113	Ball Bearing	1
16	95K-3011B16	Rotor Blade	4	47	972017	Spring Pin	3
17	970107	O-Ring	1	48	9522212	Spring	1
18	95K-3011B18	Cylinder	1	49	9051220	Ball Bearing	1
19	95K-301119	Front End Plate	1	50	95B-321150	Stop Button	1
20	95B-321120	Connector Nut	1	51	963047	Retaining Ring	1
21	951250	Muffler	1	52	9512253	Rubber Grip	1
22	95B-321122	Bevel Gear	1	53	9061020	Ball Bearing	2
23	95B-321123	Bevel Gear	1	54	90BK0709	Needle bearing	1
24	95B-321112	Spacer	1	55	956237	Oil Cap	1
25	9709112R	Snap Ring	1	56	95TW-15	Retaining Ring	2
26	970123	O-Ring	1	57	9073434	Ball Bearing	1
27	95B-321127	Felt Oiler	1	58	95D-619243	Flange	1
28	95D-327228	Spindle	1	*60	952238	Exhaust Hose	1
29	95B-321129	Spacer	1	61	95B-321161	Button Seat	1
31	95B-321131	Lock Nut	1	62	9619554	Pin Wrench	1

* Optional Part

Limited Warranty

Universal Tool warrants its tools to be free from defects in material and workmanship for one year from the date of purchase. This warranty does not apply to tools which have been abused, misused, modified or repaired by someone other than Universal Tool or its authorized service centers. If a Universal Tool proves defective in material of workmanship within one year after purchase, return it to any authorized service center or to Universal Tool, freight prepaid. Please enclose your name, address and adequate proof of purchase date with a brief description of the defect. Universal Tool will, at its option, repair or replace defective tools, free of charge. Repairs or replacements are warranted as described above for the remainder of the warranty period. Universal Tool's sole liability and your exclusive remedy under this warranty is limited to repair or replacement of the defective tool. There are no other warranties expressed or implied and Universal Tool shall not be liable for incidental, consequential or special damages, or any other damages, costs or expense of repair or replacement as described above.