

PLEASE READ AND FOLLOW ALL WARNINGS

Read Operating Instructions

Always become familiar with all the instructions and warnings before operating any power tool.



Always Wear Approved Eye Protection

Impact resistant eye protection should meet or exceed the standards as set forth in the United States ANSI Z87.1, Occupational and Educational Eye and Face Protection. Look for the marking Z87.1 on your eye protection to insure that it is an approved style. For further information, ANSI Z87.1, Occupational and Educational Eye and Face Protection, is available from the American National Standards Institute, Inc., 11 West 42nd Street, New York, NY 10036.



Hearing Protection is Recommended

Hearing protection should be used when the noise level exposure equals or exceeds an 8 hour time-weighted average sound level of 85 dBA. Process noise, reflective surfaces, other tools being operated nearby, all add to the noise level present in your work area. If you are unable to determine your noise level exposure, we recommend the use of hearing protection.



Avoid Prolonged Exposure to Vibration

Tools can vibrate during use. Prolonged exposure to vibration or very repetitive hand and arm movements, can cause injury. Stop using any tool if discomfort, tingling feeling or pain occurs. You should consult your physician before resuming use of the tool.



90 PSIG Maximum

This tool is designed to operate at

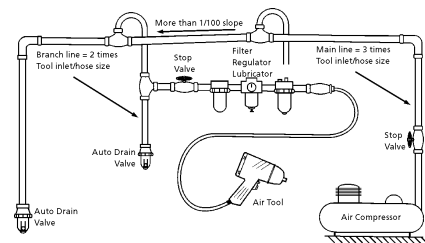
an air pressure of 90 pounds per square inch gauge pressure (90 PSIG) maximum, at the tool. Use of higher air pressure can, and may cause injury. Also, the use of higher air pressure places the internal components under loads and stresses they were not designed for, causing premature failure. The air supply should be clean and dry, preferably lubricated. For best results, drain the moisture from your compressor daily.

WARNING:

Some dust created by power sanding, sawing, grinding, drilling, and other construction activities contains chemicals known to cause cancer, birth defects or reproductive harm. Some examples of these chemicals are:

- Lead from lead-based paints
- Crystalline silica from bricks, cement and other masonry products
- Arsenic and chromium from chemically treated lumber

Your risk from these exposures varies, depending on how often you do this type of work. To reduce your exposure to these chemicals, work in a well-ventilated area and work with approved safety equipment such as those dust masks that are specially designed to filter out microscopic particles.



Description

Universal Tool Vertical Sander features ball bearing construction to ensure vibration-free operation. Variable speed control permits delicate feather edging or full force sanding. Handle exhaust vents air away from the work surface. Includes 7" backup plate, locknut and wrench.



Safety Instructions

The following instructions are furnished as general guidelines for use of your pneumatic tool. They cannot comprehensively cover all possible or conceivable uses of the subject tool. For additional information on the safe use of air tools, we advise you to obtain a copy of ANSI B186.1 Safety Code for Portable Air Tools, available from the following source:

American National Standards Institute, Inc.
11 West 42nd Street
New York, NY 10036.

The use of the word "shall" in the following instructions, indicates that adherence to the particular requirement is necessary to conform to ANSI B186.1.

Tool Application and Usage

Portable tools shall be used only for the purposes intended in their design and within the capacity for which they were intended and rated. It shall be the tool owner's and/or employer's responsibility to instruct each operator in the safe use of the tool. Tools shall not be used without guards and safety

devices as furnished by the manufacturer. Where an air tool is modified or altered, the modifier shall provide the safeguards to enable it to be safely used in the operations intended and to comply with any applicable provisions as contained in ANSI B186.1.

Tool Installation

Pressure regulators shall be used to limit air pressure to the rated pressure where the supply pressure exceeds the tool's rated pressure. Air hoses and lines shall be relieved of compressed air before being disconnected or disjoined, unless there is automatic valve closing protection at the joint being separated. Synthetic lubricants which can cause deterioration of elastomer seals shall not be used in air systems of air tools.

Tool Maintenance

It shall be the tool owner's and/or employer's responsibility to assure that tools are maintained in a safe operating condition. Tool maintenance and repair shall be performed by authorized, trained, competent personnel. Tools shall be disconnected from their compressed air supply before repairs are attempted. Repairs shall be consistent with the manufacturer's recommended procedures. Tool, hoses and fittings shall be replaced if unsuitable for safe operation. It shall be the tool owner's and/or employer's responsibility to keep required rating markings and warnings on the tool in legible condition.

Universal Tool
A Division of Florida Pneumatic Manufacturing Corporation
851 Jupiter Park Lane, Jupiter, Florida 33458
Toll Free 1-800-327-9403

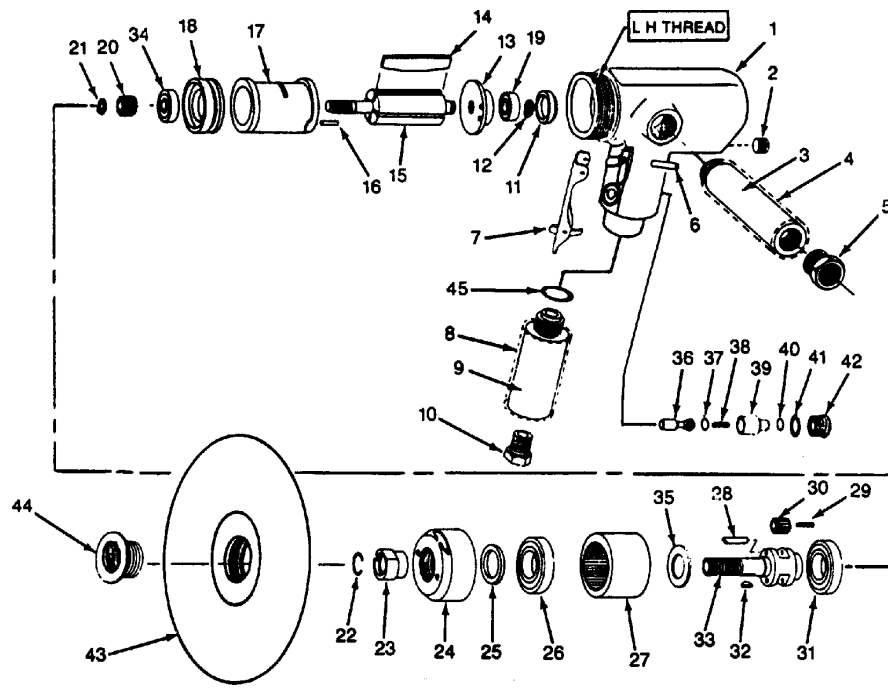
Read these instructions carefully before attempting to install, operate or service this Florida Pneumatic product. Failure to comply with the instructions could result in personal injury and/or property damage! Retain these instructions for future reference.

FPMC

Specifications

Spindle size.....	5/8" - 11
Free speed.....	5,000 RPM
Weight.....	5-1/4lbs.
Length.....	.8"
Recommended hose size.....	3/8" I.D.
Air inlet.....	1/4" NPT
Maximum air pressure.....	.90 psi
Average Air Consumption.....	.16 CFM

Parts Breakdown for UT8746



Replacement Parts for UT8746

Ref.	Description	Part #	Ref.	Description	Part #
1	Housing	8730150	26	Ball bearing	81005467
2	Plug	81008209	27	Ring gear	8730154
3	Dead handle	8729236	28	Planet pins (2)	8729219
4	Handle grip	8729237	29	Needle bearing (22)	8729220
5	Exhaust deflector	8729238		(11 ea./Ref. No. 30)	
6	Lever pin	8729167	30	Idler gear (2)	8730155
7	Locking lever	8900382	31	Ball bearing	8729222
8	Handle grip	8729237	32	Woodruff key	8731766
9	Handle	8729254	33	Idler gear cage	8730156
10	Hose adaptor	8729257	34	Ball bearing	8729113
11	Bearing cap	8729250	35	Idler gear cage washer	8730157
12	Retaining ring	8729225	36	Valve stem	8729259
13	Rear plate	8729231	37	Valve stem O-ring	81012370
14	Rotor blade (4)	8729230	38	Spring	8729258
15	Rotor	8730151	39	Air regulator	8729282
16	Dowel pin	8729252	40	O-Ring	8729088
17	Cylinder	8729229	41	O-Ring	8729073
18	Front end plate	8729228	42	Valve screw	8729262
19	Ball bearing	8729188	43	7" Sanding plate	8731247
20	Pinion	8730152	44	Nut	8731075
21	Retaining ring	8900238	45	O-Ring	8900409
22	Collar retaining ring	8729212	Δ	Guard complete	718046
23	Collar	8729213	Δ	3/4" Spanner wrench	8900667
24	Clamp nut	8730153	(Δ)	Not shown	
25	Oil seal	8729215			

Limited Warranty

Universal Tool warrants its tools to be free from defects in material and workmanship for one year from the date of purchase. This warranty does not apply to tools which have been abused, misused, modified or repaired by someone other than Universal Tool or its authorized service centers. If a Universal Tool proves defective in material of workmanship within one year after purchase, return it to any authorized service center or to Universal Tool, freight prepaid. Please enclose your name, address and adequate proof of purchase date with a brief description of the defect. Universal Tool will, at its option, repair or replace defective tools, free of charge. Repairs or replacements are warranted as described above for the remainder of the warranty period. Universal Tool's sole liability and your exclusive remedy under this warranty is limited to repair or replacement of the defective tool. There are no other warranties expressed or implied and Universal Tool shall not be liable for incidental, consequential or special damages, or any other damages, costs or expense of repair or replacement as described above.