

PLEASE READ AND FOLLOW ALL WARNINGS



UT8420C/UT8422C

1" DRIVE IMPACT WRENCH

Read Operating Instructions

Always become familiar with all the instructions and warnings before operating any power tool.

Always Wear Approved Eye Protection

Impact resistant eye protection should meet or exceed the standards as set forth in the United States ANSI Z87.1, Occupational and Educational Eye and Face Protection. Look for the marking Z87.1 on your eye protection to insure that it is an approved style. For further information, ANSI Z87.1, Occupational and Educational Eye and Face Protection, is available from the American National Standards Institute, Inc., 11 West 42nd Street, New York, NY 10036.

Hearing Protection is Recommended

Hearing protection should be used when the noise level exposure equals or exceeds an 8 hour time-weighted average sound level of 85 dBA. Process noise, reflective surfaces, other tools being operated nearby, all add to the noise level present in your work area. If you are unable to determine your noise level exposure, we recommend the use of hearing protection.

Avoid Prolonged Exposure to Vibration

Tools can vibrate during use. Prolonged exposure to vibration or very repetitive hand and arm movements, can cause injury. Stop using any tool if discomfort, tingling feeling or pain occurs. You should consult your physician before resuming use of the tool.

90 PSIG Maximum

This tool is designed to operate at

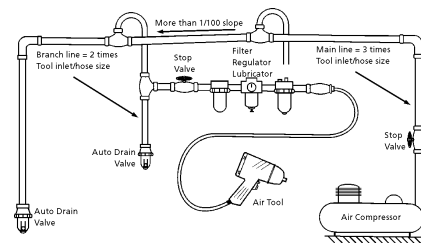
an air pressure of 90 pounds per square inch gauge pressure (90 PSIG) maximum, at the tool. Use of higher air pressure can, and may cause injury. Also, the use of higher air pressure places the internal components under loads and stresses they were not designed for, causing premature failure. The air supply should be clean and dry, preferably lubricated. For best results, drain the moisture from your compressor daily.

WARNING:

Some dust created by power sanding, sawing, grinding, drilling, and other construction activities contains chemicals known to cause cancer, birth defects or reproductive harm. Some examples of these chemicals are:

- Lead from lead-based paints
- Crystalline silica from bricks, cement and other masonry products
- Arsenic and chromium from chemically treated lumber

Your risk from these exposures varies, depending on how often you do this type of work. To reduce your exposure to these chemicals, work in a well-ventilated area and work with approved safety equipment such as those dust masks that are specially designed to filter out microscopic particles.



Description

Universal Tool 1" impact wrenches are designed for heavy duty applications requiring high torque and power. Twin hammer clutch mechanism provides powerful blows and long life. Adjustable side handle for increased operator control. Model UT8422C has a 6" extended anvil for easier access to recessed areas.

PL0195



devices as furnished by the manufacturer. Where an air tool is modified or altered, the modifier shall provide the safeguards to enable it to be safely used in the operations intended and to comply with any applicable provisions as contained in ANSI B186.1.

Safety Instructions

The following instructions are furnished as general guidelines for use of your pneumatic tool. They cannot comprehensively cover all possible or conceivable uses of the subject tool. For additional information on the safe use of air tools, we advise you to obtain a copy of ANSI B186.1 Safety Code for Portable Air Tools, available from the following source:

American National Standards Institute, Inc.

11 West 42nd Street
New York, NY 10036.

The use of the word "shall" in the following instructions, indicates that adherence to the particular requirement is necessary to conform to ANSI B186.1.

Tool Application and Usage

Portable tools shall be used only for the purposes intended in their design and within the capacity for which they were intended and rated. It shall be the tool owner's and/or employer's responsibility to instruct each operator in the safe use of the tool. Tools shall not be used without guards and safety

Tool Installation

Pressure regulators shall be used to limit air pressure to the rated pressure where the supply pressure exceeds the tool's rated pressure. Air hoses and lines shall be relieved of compressed air before being disconnected or disjoined, unless there is automatic valve closing protection at the joint being separated. Synthetic lubricants which can cause deterioration of elastomer seals shall not be used in air systems of air tools.

Tool Maintenance

It shall be the tool owner's and/or employer's responsibility to assure that tools are maintained in a safe operating condition. Tool maintenance and repair shall be performed by authorized, trained, competent personnel. Tools shall be disconnected from their compressed air supply before repairs are attempted. Repairs shall be consistent with the manufacturer's recommended procedures. Tool, hoses and fittings shall be replaced if unsuitable for safe operation. It shall be the tool owner's and/or employer's responsibility to keep required rating markings and warnings on the tool in legible condition.

Read these instructions carefully before attempting to install, operate or service this Florida Pneumatic product. Failure to comply with the instructions could result in personal injury and/or property damage! Retain these instructions for future reference.

Universal Tool

A Division of Florida Pneumatic Manufacturing Corporation

851 Jupiter Park Lane, Jupiter, Florida 33458

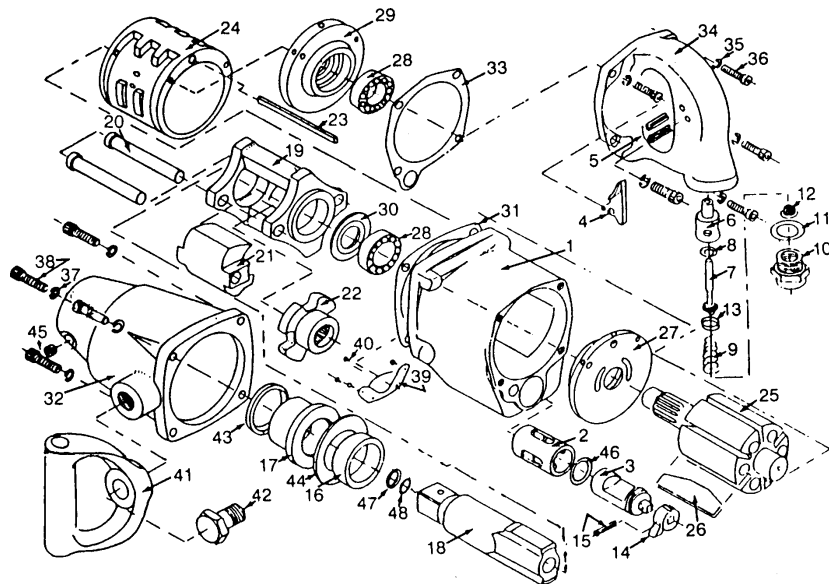
Toll Free 1-800-327-9403

FPMC

Drive size.....	1"
Free speed (No load).....	4,000 RPM
Maximum torque.....	1,200 ft. lbs.
Weight (UT8420).....	27 lbs.
Weight (UT8422).....	30 lbs.
Overall length (UT8420).....	16"
Overall length (UT8422).....	22"
Average air consumption.....	6 CFM
Recommended hose size.....	1/2" I.D.
Air inlet.....	1/2" NPT
Maximum operating pressure.....	90 psi

Parts Breakdown for UT8420C/UT8422C
USE ONLY IMPACT SOCKETS & ACCESSORIES

Sockets and accessories used shall be of the impact socket type. Always check sockets, retainers and drives regularly for wear or damage and replace whenever necessary


Replacement Parts for UT8420C/UT8422C

Ref.	Description	Part #	Ref.	Description	Part #
1	Motor Housing	9828001	25	Rotor	9828025
2	Reverse valve	9828002	26	Rotor blade (6)	9828026
	bushing		27	Front end plate	9828027
3	Reverse valve	9828003	28	Ball bearing (2)	9828028
4	Trigger	9828004	29	Rear end plate	9828029
5	Pin	9828005	30	Bearing spacer	9828030
6	Throttle bushing	9828008	31	Gasket	9828023
7	Throttle pin	9828007	32	Clutch housing	9828044
8	O-Ring	9828006	33	Gasket	9828033
9	Throttle spring	9828009	34	Pistol grip handle	9828034
10	Hose adapter	9828010	35	Lock washer (4)	9828035
11	Gasket	9828011	36	Cap screw (4)	9828036
12	Air screen	9828031	37	Lock washer (4)	9828037
13	O-Ring retainer	9828046	38	Cap screw (4)	9828038
14	Reverse lever	9828014	39	Exhaust deflector	9828039
15	Roll pin	9828013	40	Screw (4)	9828042
16	Flange bushing	9828016	41	Dead handle	9828041
17	Anvil bushing	9828017	42	Dead handle bolt	9828040
18	Std. Anvil (1"Drive)	9828018	43	Oil seal	9828015
18	Ext. Anvil (6")	9828049	44	Washer	9828047
19	Hammer Cage	9828019	45	Screw	9828043
20	Hammer pin	9828020	46	O-Ring	9828012
21	Hammer dog	9828021	47	Anvil collar	9828045
22	Drive cam	9828022	48	O-Ring	9828048
23	Cylinder pin	9828032			
24	Cylinder	9828024			

Limited Warranty

Universal Tool warrants its tools to be free from defects in material and workmanship for one year from the date of purchase. This warranty does not apply to tools which have been abused, misused, modified or repaired by someone other than Universal Tool or its authorized service centers. If a Universal Tool proves defective in material of workmanship within one year after purchase, return it to any authorized service center or to Universal Tool, freight prepaid. Please enclose your name, address and adequate proof of purchase date with a brief description of the defect. Universal Tool will, at its option, repair or replace defective tools, free of charge. Repairs or replacements are warranted as described above for the remainder of the warranty period. Universal Tool's sole liability and your exclusive remedy under this warranty is limited to repair or replacement of the defective tool. There are no other warranties expressed or implied and Universal Tool shall not be liable for incidental, consequential or special damages, or any other damages, costs or expense of repair or replacement as described above.