

# PLEASE READ AND FOLLOW ALL WARNINGS

## Read Operating Instructions

Always become familiar with all the instructions and warnings before operating any power tool.

## Always Wear Approved Eye Protection

Impact resistant eye protection should meet or exceed the standards as set forth in the United States ANSI Z87.1, Occupational and Educational Eye and Face Protection. Look for the marking Z87.1 on your eye protection to insure that it is an approved style. For further information, ANSI Z87.1, Occupational and Educational Eye and Face Protection, is available from the American National Standards Institute, Inc., 11 West 42nd Street, New York, NY 10036.

## Hearing Protection is Recommended

Hearing protection should be used when the noise level exposure equals or exceeds an 8 hour time-weighted average sound level of 85 dBA. Process noise, reflective surfaces, other tools being operated nearby, all add to the noise level present in your work area. If you are unable to determine your noise level exposure, we recommend the use of hearing protection.

## Avoid Prolonged Exposure to Vibration

Tools can vibrate during use. Prolonged exposure to vibration or very repetitive hand and arm movements, can cause injury. Stop using any tool if discomfort, tingling feeling or pain occurs. You should consult your physician before resuming use of the tool.

## 90 PSIG Maximum

This tool is designed to operate at

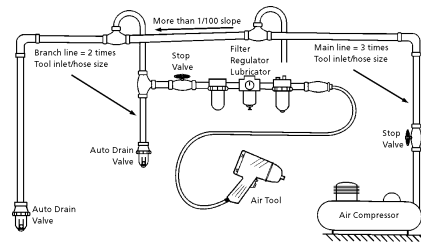
an air pressure of 90 pounds per square inch gauge pressure (90 PSIG) maximum, at the tool. Use of higher air pressure can, and may cause injury. Also, the use of higher air pressure places the internal components under loads and stresses they were not designed for, causing premature failure. The air supply should be clean and dry, preferably lubricated. For best results, drain the moisture from your compressor daily.

## WARNING:

Some dust created by power sanding, sawing, grinding, drilling, and other construction activities contains chemicals known to cause cancer, birth defects or reproductive harm. Some examples of these chemicals are:

- Lead from lead-based paints
- Crystalline silica from bricks, cement and other masonry products
- Arsenic and chromium from chemically treated lumber

Your risk from these exposures varies, depending on how often you do this type of work. To reduce your exposure to these chemicals, work in a well-ventilated area and work with approved safety equipment such as those dust masks that are specially designed to filter out microscopic particles.



## Description

The Universal Tool Heavy Duty Impact Wrench is designed for automotive, agricultural, manufacturing and maintenance applications such as general assembly, transmission teardown, engine repair, tapping and reaming, etc. This unit features built-in regulator for convenient torque output adjustment and quick change ring-socket retainer.



## Safety Instructions

The following instructions are furnished as general guidelines for use of your pneumatic tool. They cannot comprehensively cover all possible or conceivable uses of the subject tool. For additional information on the safe use of air tools, we advise you to obtain a copy of ANSI B186.1 Safety Code for Portable Air Tools, available from the following source:

American National Standards Institute, Inc.  
11 West 42nd Street  
New York, NY 10036.

The use of the word "shall" in the following instructions, indicates that adherence to the particular requirement is necessary to conform to ANSI B186.1.

## Tool Application and Usage

Portable tools shall be used only for the purposes intended in their design and within the capacity for which they were intended and rated. It shall be the tool owner's and/or employer's responsibility to instruct each operator in the safe use of the tool. Tools shall not be used without guards and safety

devices as furnished by the manufacturer. Where an air tool is modified or altered, the modifier shall provide the safeguards to enable it to be safely used in the operations intended and to comply with any applicable provisions as contained in ANSI B186.1.

## Tool Installation

Pressure regulators shall be used to limit air pressure to the rated pressure where the supply pressure exceeds the tool's rated pressure. Air hoses and lines shall be relieved of compressed air before being disconnected or disjoined, unless there is automatic valve closing protection at the joint being separated. Synthetic lubricants which can cause deterioration of elastomer seals shall not be used in air systems of air tools.

## Tool Maintenance

It shall be the tool owner's and/or employer's responsibility to assure that tools are maintained in a safe operating condition. Tool maintenance and repair shall be performed by authorized, trained, competent personnel. Tools shall be disconnected from their compressed air supply before repairs are attempted. Repairs shall be consistent with the manufacturer's recommended procedures. Tool, hoses and fittings shall be replaced if unsuitable for safe operation. It shall be the tool owner's and/or employer's responsibility to keep required rating markings and warnings on the tool in legible condition.

*Read these instructions carefully before attempting to install, operate or service this Florida Pneumatic product. Failure to comply with the instructions could result in personal injury and/or property damage! Retain these instructions for future reference.*

**FPMC**

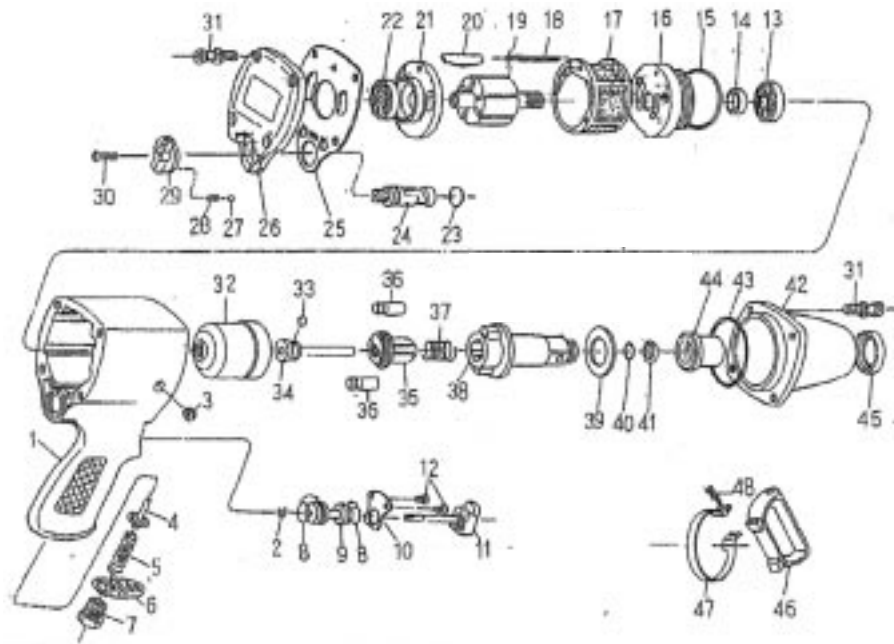
Universal Tool  
A Division of Florida Pneumatic Manufacturing Corporation  
851 Jupiter Park Lane, Jupiter, Florida 33458  
Toll Free 1-800-327-9403



Free Speed RPM.....	3800
Drive Size.....	3/4 in.
Max. Torque.....	1300 ft./lbs.
Tool Length.....	11 in.
Operating Air Pressure.....	90 PSI
Air Inlet Size.....	3/8 in. NPT
Min. Hose Size.....	1/2 in. I.D.
Weight.....	16 3/4 lbs.
Average Air Consumption.....	8.5 CFM

**Parts Breakdown for UT8355C / UT8410C**
**USE ONLY IMPACT SOCKETS & ACCESSORIES**

Sockets and accessories used shall be of the impact socket type. Always check sockets, retainers and drives regularly for wear or damage and replace whenever necessary


**Replacement Parts for UT8355C**

Ref.	Description	Part #	Ref.	Description	Part #
1	Motor Housing	8700661	27	Steel Ball	8731859
2	E-Ring	8700736	28	Spring	8731858
3	Oil Plug	8729739	29	Regulator Lever	8700829
4	Valve stem	8700825	30	Tapping Screw	8700077
5	Throttle Spring	8700597	31	Screw w/washer	8700504
6	Exhaust Deflector	8700598	32	Hammer Cage	8700514
7	Hose Adaptor	8700599	33	Cam Ball	8700180
8	O-Ring (2)	8700202	34	Cam Ball Pilot	8700515
9	Throttle Bushing	8700826	35	Hammer Cam	8700517
10	Stop Cover	8700602	36	Hammer Pin	8700516
11	Throttle Trigger	8700827	37	Cam Release Spring	8700518
12	Tapping Screw (2)	8700077	38	Anvil (UT8355)	8700903
13	Ball Bearing	8700175	39	Anvil (UT8413)	8700519
14	Oil Seal	8700174	39	Anvil Spacer	8700186
15	O-Ring	8700654	40	O-Ring (UT8355)	8731878
16	Front Plate	8700653	40	O-Ring (UT8413)	8729774
17	Cylinder	8700510	41	Socket Ring (UT8355)	8731879
18	Motor Pin	8700501	41	Socket Ring (UT8413)	8729775
19	Rotor	8700509	42	Steel Housing	8700903
20	Rotor Blade	8700508	43	O-Ring	8700188
21	Rear Plate	8700507	44	Anvil Bushing	8700521
22	Ball Bearing	8700506	45	Oil Seal	8700190
23	O-Ring	8731857	46	Handle	8700644
24	Reverse Regulator	8700828	47	Handle Band	8700453
25	Gasket	8700663	48	Screw w/washer	8700638
26	End Cap	8700662			

**Limited Warranty**

Universal Tool warrants its tools to be free from defects in material and workmanship for one year from the date of purchase. This warranty does not apply to tools which have been abused, misused, modified or repaired by someone other than Universal Tool or its authorized service centers. If a Universal Tool proves defective in material of workmanship within one year after purchase, return it to any authorized service center or to Universal Tool, freight prepaid. Please enclose your name, address and adequate proof of purchase date with a brief description of the defect. Universal Tool will, at its option, repair or replace defective tools, free of charge. Repairs or replacements are warranted as described above for the remainder of the warranty period. Universal Tool's sole liability and your exclusive remedy under this warranty is limited to repair or replacement of the defective tool. There are no other warranties expressed or implied and Universal Tool shall not be liable for incidental, consequential or special damages, or any other damages, costs or expense of repair or replacement as described above.