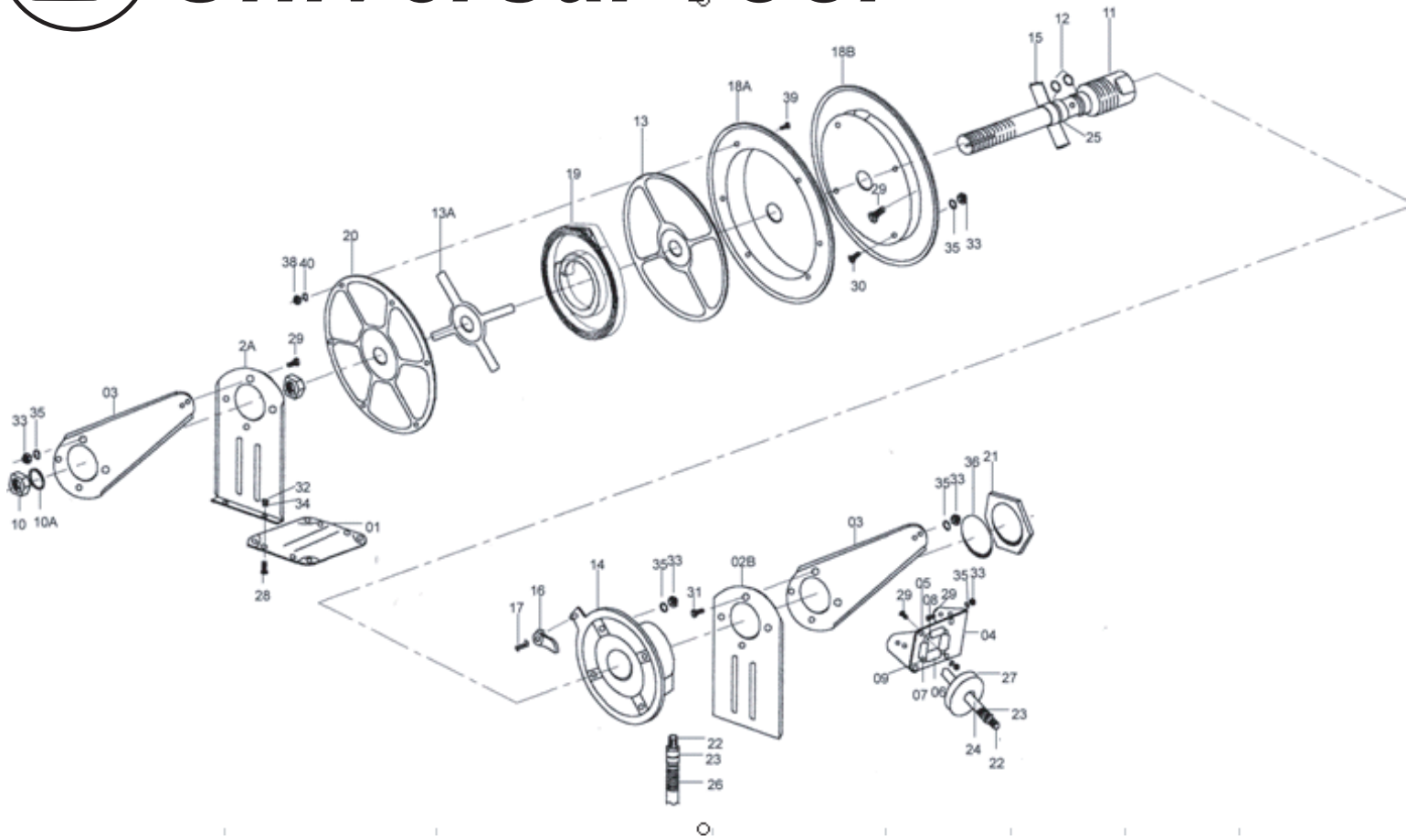




Universal Tool

Model No. UT6802
Retractable Hose Reel



Ref	Part No	Qty	Description	Ref	Part No	Qty	Description
1	9H415-01	1	Base	19	9H6415-19	1	Drive Spring
2A	9H4615-02A	1	Support Bracket	20	9H415-20	1	Reel Cover
2B	9H4615-02B	1	Support Bracket	21	9H415-21	1	Axle Nut
3	9H415-03	1	Guide Arm	22	9H4615-22	2	Outlet Connector
4	9H415-04	1	Assembly Roller Bracket	23	9H4615-23	2	Copper Bush
5	9H415-05	1	Assembly Roller Gasket	24	9H4615-24	1	1/2" x 50' Rubber Hose
6	9H415-06	2	Long Roller Assmby	25	9H415-25	1	Plastic Gasket
7	9H415-07	2	Short Roller Assmby	26	9H4615-26	1	Proective Spring
8	9H415-08	2	Long Assembly Roller Washer	27	9H4615-27	1	Ball Stop
9	9H415-09	2	Short Assembly Roller Washer	28	9H415-28	4	Hex Screw
10	9H415-10	1	Nut, Jam	29	9H415-29	16	Hex Screw
10A	9H415-10A	2	Gasket	30	9H415-30	4	Flat Screw
11	9H415-11	1	Inlet Axle	31	9H415-31	4	Flat Screw
12	9H415-12	1	O-Ring	32	9H415-32	4	Nut
13	9H415-13	1	Plastic Gasket	33	9H415-33	24	Nut
13A	9H415-13A	1	Sring Plastic Gasket	34	9H415-34	4	Gasket
14	9H415-14	1	Air Base	35	9H415-35	24	Gasket
15	9H415-15	1	Clamp Base	36	9H415-36	1	Gasket
16	9H415-16	1	Clamp	37	9H415-37	1	Nut
17	9H415-17	1	Clamp Spring	38	9H415-38	4	Nut
18A	9H4615-18A	1	Frange,Left	39	9H415-39	5	Flat Screw
18B	9H4615-18B	1	Frange,Right	40	9H415-40	4	Gasket

INSTRUCTIONS

Installation:

1. A flexible hose connection must be used between the hose reel inlet and the source of supply to prevent possible misalignment and binding.
2. Install the reels above 10 feet from the floor.
3. If the reel you have bought is unassembled hose, you must purchase proper hose and attach hose to reel.
4. The hose reel is equipped with a wide slots for easy installation so that it can be mounted on the floor/ wall/ ceiling, whichever place is convenient.
5. Apply Teflon tape or thread sealant to Inlet Hose threads and attach one end to Reel Inlet.
6. Apply Teflon tape or thread sealant to Outlet Hose Fitting. Attach outlet to air tools.
7. Must use a FLEXIBLE inlet hose, and a swivel type connector is required on air compressor.

Replacement of Hose:

1. Wind spool flange clockwise-facing swivel-until spring is tight
2. Pull out all the Hose and lock the Reel in that position.
Caution: Make sure reel is securely locked and will not rotate back.
3. Insert hose through roller guide and hole in spool flange
4. Connect hose fitting to swivel joint and secure hose with clamps.
5. Carefully disconnect Hose from Swivel Joint on side of Reel and remove old Hose.
6. The Male fitting should now be on the outside of the Drum. Apply Teflon tape or thread sealant and connect Hose Fitting to the Swivel Joint. Secure Hose rigid with hose Clamp.

Adjustments:

1. To adjust spring tension, add or remove wraps of hose from the spool, one wrap at a time until desired tension is obtained.
2. Pull out 6" (or 2m) of Hose and latch the drum.
3. Add one wrap of hose to the Drum to increase tension or take away one wrap to decrease tension.
4. Connect Inlet Hose.

Safety Precautions

1. Make sure incoming pressure does not exceed 250 PSI.
2. Use proper eye protection when assembling and using the hose reel.
3. Use sap and water when checking for air leaks.
4. Do not expose fingers or hands directly to a pressurized air hose, or it will result in severe body injury.
5. Keep children away from the work area.

Limited Warranty

All products manufactured by Florida Pneumatic Mfg. Corp. are warranted to be free of defects in material and workmanship for the period of one year from the date of purchase, except hose. Our liability shall be limited to repair or replacement of defective material within the warranty period when returned freight prepaid to its plant or to a service depot designated by us. This warranty does not apply to damage due directly or indirectly, to misuse, abuse, negligence or accidental, repairs or alterations outside or facilities, or to lack of maintenance. We shall in no event be liable for death, injuries to persons or property, or for incidental, contingent, special or consequential damages arising from the use of our product.