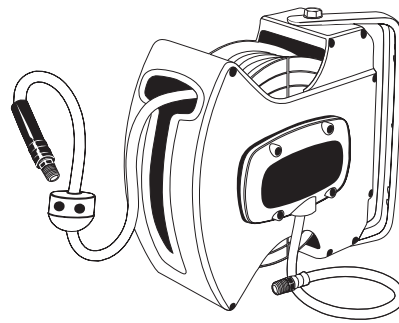




# 50 ft. Retractable Air Reel

Part No. UT6800



**CAUTION:** Read all instructions and warnings before operating  
**SAVE THESE INSTRUCTIONS! READ ALL INSTRUCTIONS!**

CAUTION: Inspect hose before each use; do not exceed working pressure ( 300 PSI Maximum Working Pressure ); do not kink, twist, knot or abrade hose; do not wrap hose around body; keep away from hot surfaces and/or chemicals.

## CONTENTS:

Ref. No.	Qty.	Description
1	1	Reel
2	1	Mounting bracket
3	2	Plastic washers
4	2	Metal washers
5	2	Bolts

## WARRANTY

Florida Pneumatic Manufacturing ("Universal Tool") warrants that this equipment will be free from defects in material and workmanship for a period of one (1) year from the date of purchase, under normal use. Universal Tool's sole obligation under this warranty is limited to replacing or repairing, free of charge, any equipment that proves to be defective under normal conditions and use according to the recommendations of Universal Tool. To obtain repair or replacement, the equipment must be shipped to a Universal Tool authorized Warranty and Service Center during the warranty period, transportation charges prepaid, with proof of date of purchase. In the event of repair or replacement, the warranty period shall not be extended beyond the original warranty period.

## INSTALLATION:

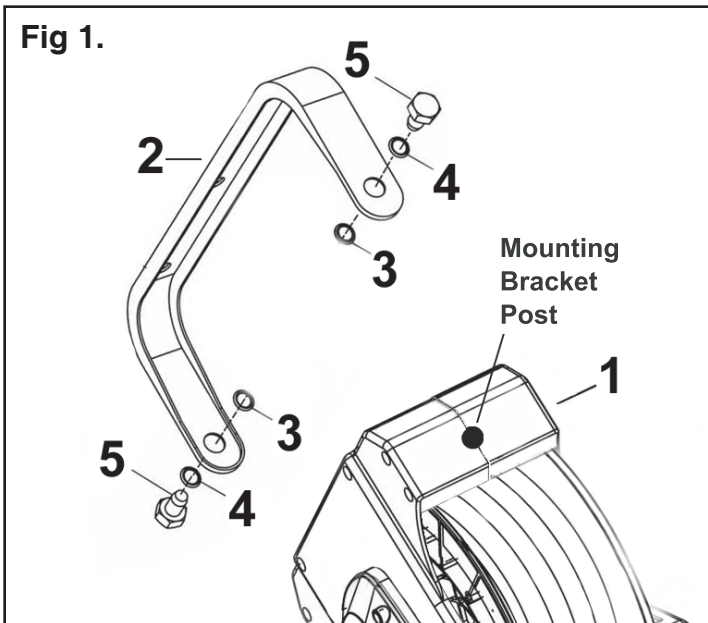
- 1) Place bracket on a flat mounting surface. With a pencil trace bracket mounting holes onto surface. Use a leveling device to ensure that the bracket will be level once fastened.

**MOUNTING OPTIONS:**

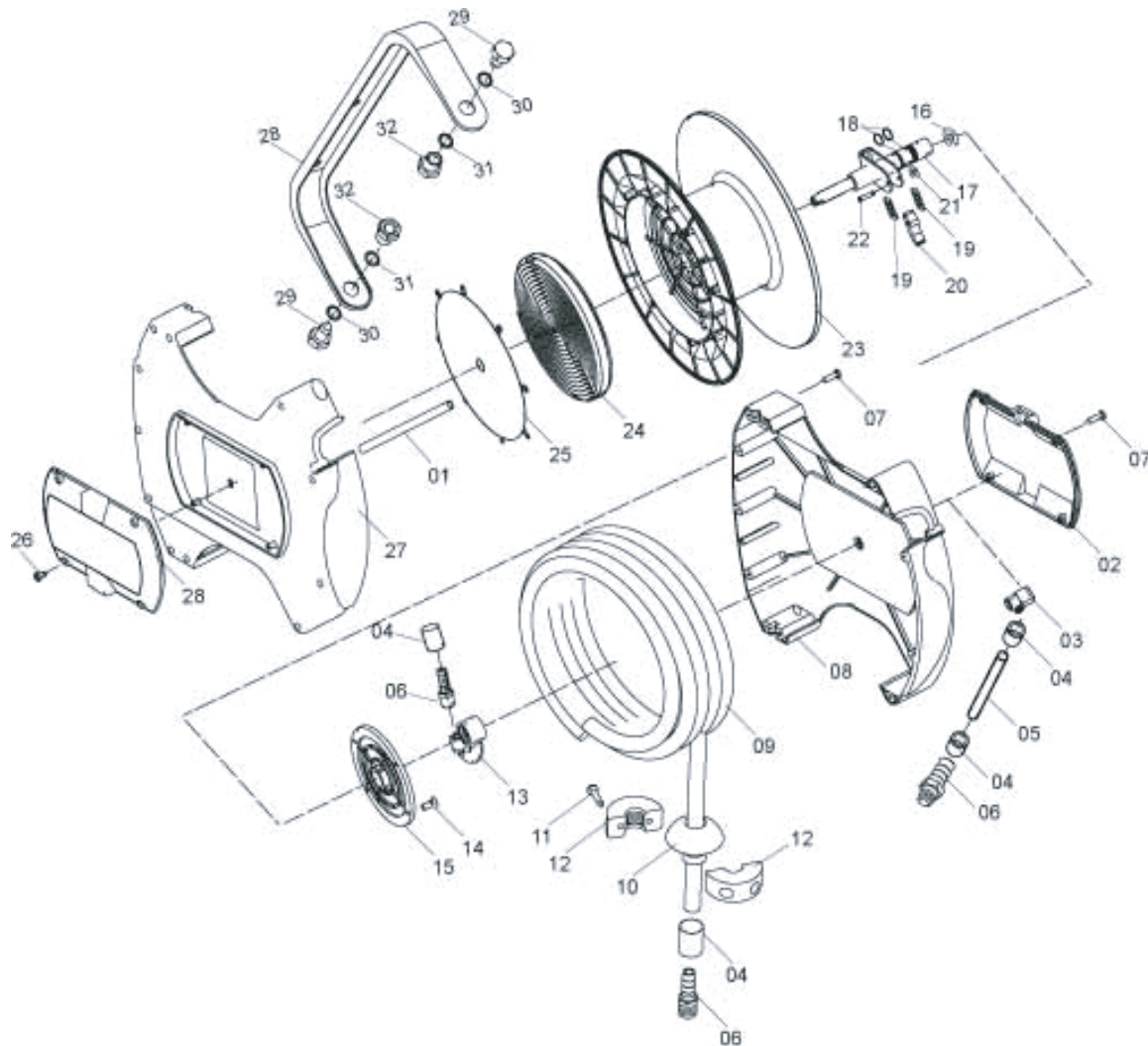
**Mounting to wall**  
Recommended height ( 5 ft. to 8 ft. )

**Mounting overhead**  
Recommended ceiling height ( 8 ft. to 10 ft. )

- 2) Place Plastic Washers (3) over mounting bracket posts located at the back of Reel (1) ( Fig. 1 ).
- 3) Position Mounting Bracket (2) so that the pivot holes fit over the posts
- 4) Place Metal Washers (4) onto posts.
- 5) Fasten Reel to Mounting Bracket by threading the Bolts (5) into the posts.



**Universal Tool**  
a Division of Florida Pneumatic Mfg. Corp.  
851 Jupiter Park Lane  
Jupiter, Florida 33458  
www.florida-pneumatic.com



## Part List

Ref	Part No	Qty	Description
1	9HR3-315-01	1	Brass Tube
2	9HR3-315-02	2	Side Plate
3	9HR3-315-03	1	Brass Elbow
4	9HR3-315-04	4	Brass Ferrule
5	9HR3-315-05	1	Lead in Hose
6	9HR3-315-06	3	Brass Fittings
7	9HR3-315-07	8	Screw. Housing
8	9HR3-315-08	1	Right Cover
9	9HR3-315-09	1	PVC Air Hose
10	9HR3-315-10	1	Hose Stopper
11	9HR3-315-11	2	Screw. Hose Stopper
12	9HR3-315-12	2	Lock Piece
13	9HR3-315-13	1	Brass Connector
14	9HR3-315-14	4	Screw. Cover Plate
15	9HR3-315-15	1	Cover Plate
16	9HR3-315-16	1	E-ring

Ref	Part No	Qty	Description
17	9HR3-315.17	1	Rotary Axle
18	9HR3-315-18	2	O-Ring
19	9HR3-315-19	2	Pawl Spring
20	9HR3-315-20	1	Pawl
21	9HR3-315-21	1	E-ring
22	9HR3-315-22	1	Pawl Pin
23	9HR3-315-23	1	Reel Drum
24	9HR3-315-24	1	Drive Spring
25	9HR3-315-25	1	Cover. Drive Spring
26	9HR3-315-26	8	Screw
27	9HR3-315-27	1	Left Cover
28	9HR3-315-28	1	Mounting Bracket
29	9HR3-315-29	2	Lock Screw
30	9HR3-315-30	2	Iron Washer
31	9HR3-315-31	2	Plastic Washer
32	9HR3-315-32	2	Swivel Joint-Female