

# PLEASE READ AND FOLLOW ALL WARNINGS



UT200H-60-6  
Horizontal Grinder Series

## Read Operating Instructions

Always become familiar with all the instructions and warnings before operating any power tool.

### Always Wear Approved

#### Eye Protection

Impact resistant eye protection should meet or exceed the standards as set forth in the United States ANSI Z87.1, Occupational and Educational Eye and Face Protection. Look for the marking Z87.1 on your eye protection to insure that it is an approved style. For further information, ANSI Z87.1, Occupational and Educational Eye and Face Protection, is available from the American National Standards Institute, Inc., 11 West 42nd Street, New York, NY 10036.

#### Hearing Protection is Recommended

Hearing protection should be used when the noise level exposure equals or exceeds an 8 hour time-weighted average sound level of 85 dBA. Process noise, reflective surfaces, other tools being operated nearby, all add to the noise level present in your work area. If you are unable to determine your noise level exposure, we recommend the use of hearing protection.

#### Avoid Prolonged Exposure to Vibration

Tools can vibrate during use. Prolonged exposure to vibration or very repetitive hand and arm movements, can cause injury. Stop using any tool if discomfort, tingling feeling or pain occurs. You should consult your physician before resuming use of the tool.

#### 90 PSIG Maximum

This tool is designed to operate at

an air pressure of 90 pounds per square inch gauge pressure (90 PSIG) maximum, at the tool. Use of higher air pressure can, and may cause injury. Also, the use of higher air pressure places the internal components under loads and stresses they were not designed for, causing premature failure. The air supply should be clean and dry, preferably lubricated. For best results, drain the moisture from your compressor daily.

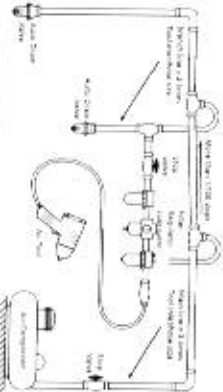
#### WARNING:

### ONLY USE ACCESSORIES THAT ARE RATED TO RUN AT THE MAXIMUM SPEED (RPM) OR HIGHER.

Some dust created by power sanding, sawing, grinding, drilling, and other construction activities contains chemicals known to cause cancer, birth defects or reproductive harm. Some examples of these chemicals are:

- Lead from lead-based paints
- Crystalline silica from bricks, cement and other masonry products
- Arsenic and chromium from chemically treated lumber

Your risk from these exposures varies, depending on how often you do this type of work. To reduce your exposure to these chemicals, work in a well-ventilated area and work with approved safety equipment such as those dust masks that are specially designed to filter out microscopic particles.



## Description

- 2.0 HP Motor prevents stall under load
- Governor controlled to maintain speed for optimum material removal
- Safety lock-off throttle
- Double pre-loaded bearing spindle design adds reliability
- Steel motor housing & spindle housing increase durability
- Best for Heavy duty continuous grinding



## Safety Instructions

The following instructions are furnished as general guidelines for use of your pneumatic tool. They cannot comprehensively cover all possible or conceivable uses of the subject tool. For additional information on the safe use of air tools, we advise you to obtain a copy of ANSI B186.1 Safety Code for Portable Air Tools, available from the following source:

American National Standards Institute, Inc.  
11 West 42nd Street  
New York, NY 10036.

The use of the word "shall" in the following instructions, indicates that adherence to the particular requirement is necessary to conform to ANSI B186.1.

### Tool Application and Usage

Portable tools shall be used only for the purposes intended in their design and within the capacity for which they were intended and rated. It shall be the tool owner's and/or employer's responsibility to instruct each operator in the safe use of the tool. Tools shall not be used without guards and safety

devices as furnished by the manufacturer. Where an air tool is modified or altered, the modifier shall provide the safeguards to enable it to be safely used in the operations intended and to comply with any applicable provisions as contained in ANSI B196.1.

### Tool Installation

Pressure regulators shall be used to limit air pressure to the rated pressure where the supply pressure exceeds the tool's rated pressure. Air hoses and lines shall be relieved of compressed air before being disconnected or disjoined, unless there is automatic valve closing protection at the joint being separated. Synthetic lubricants which can cause deterioration of elastomer seals shall not be used in air systems of air tools.

### Tool Maintenance

It shall be the tool owner's and/or employer's responsibility to assure that tools are maintained in a safe operating condition. Tool maintenance and repair shall be performed by authorized trained, competent personnel. Tools shall be disconnected from their compressed air supply before repairs are attempted. Repairs shall be consistent with the manufacturer's recommended procedures. Tool, hoses and fittings shall be replaced if unsuitable for safe operation. It shall be the tool owner's and/or employer's responsibility to keep required rating markings and warnings on the tool in legible condition.

## Universal Tool

A Division of Florida Pneumatic Manufacturing Corporation  
851 Jupiter Park Lane, Jupiter, Florida 33458  
Toll Free 1-800-327-9403

Read these instructions carefully before attempting to install, operate or service this Florida Pneumatic product. Failure to comply with the instructions could result in personal injury and/or property damage! Retain these instructions for future reference.





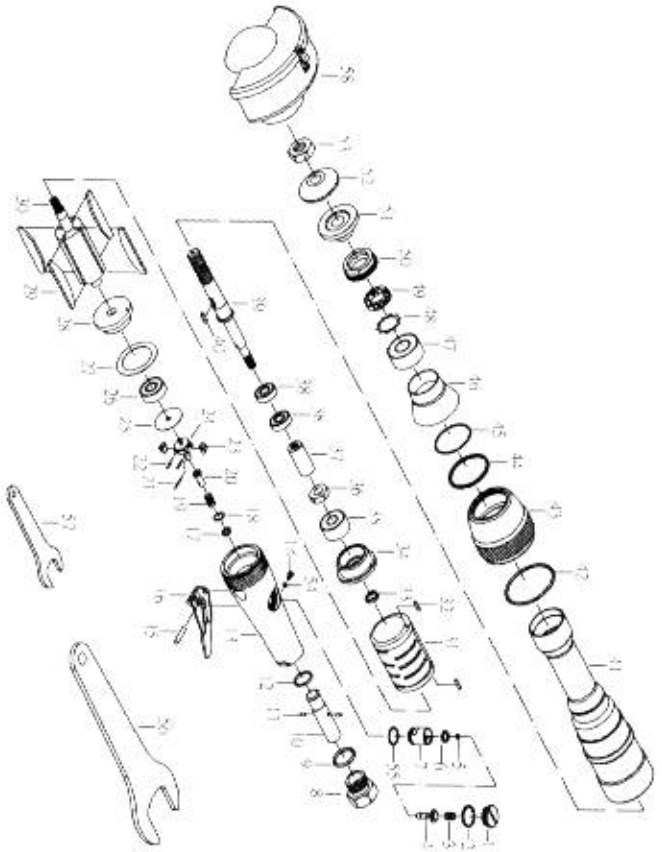
Universal Tool

UT200H-60-6  
Horizontal Grinder Series



Universal Tool

UT200H-60-6  
Horizontal Grinder Series



NO	PART NO	DESCRIPTION	QTY	NO	PART NO	DESCRIPTION	QTY
1	9200H6001	BOLT	1	30	9200H6030	ROTOR	1
2	988005	O-RING (A5019)	1	31	987034	CYLINDER	1
3	9200H6003	SPRING	1	32	981326	PIN (3*8L)	1
4	9200H6004	VALVE STEM	1	33	9200H6033	WASHER	2
5	908-04	OIL PIPE (3.5*1.4)	1	34	9200H6034	FRONT PLATE	1
6	9200H6006	OIL PIPE	1	35	9200H6035	BEARING (5201)	1
7	9200H6007	BUSHING	1	36	9200H6036	NUT (M12*1.25P*7T)	1
8	9200H6008	AIR INLET	1	37	9200H6037	COUPLING	1
9	9200H6009	O-RING (P22.4)	1	38	970048A	BEARING (600022)	2
10	9200H6010	WASHER	1	39	9200H6039	SHAFT	1
11	9200H6011	PIN	1	40	9200H6040	SLIDING KEY (3*3*15L)	1
12	908-11.1	O-RING (P24)	2	41	9200H6041	HOUSING	1
13	9200H6013	HOUSING HANDLE	1	42	9200H6042	O-RING (A5144)	1
14	980528	SCREW (M5*6)	1	43	9200H6043	MUFFLER BODY	1
15	9200H6015	PIN (5*23L)	1	44	95708-24	O-RING (A5133)	1
16	9200H6016	LEVER	1	45	9200H6045	SNAP RING	1
17	987020	SPRING HOLDER	1	46	9200H6046	BUSHING	1
18	987021	WASHER (14*9.5*0.5T)	1	47	9200H6047	BEARING (5203)	1
19	987022	SPRING (9.7*1.2T*16.5)	1	48	9200H6048	WASHER	1
20	987023	GOVERNOR VALVE	1	49	9200H6049	DUSTPROOF WASHER	1
21	987024	PIN (2*11.8L)	1	50	9200H6050	BOLT	1
22	987026	GOVERNOR PIN	2	51	9200H6051	DISC NUT	1
23	987025	GOVERNOR WEIGHT	2	52	9200H6052	DISC NUT	1
24	987027	GOVERNOR CAGE	1	53	9200H6053	NUT (W5/8*11*10T)	1
25	987028	WASHER	1	54	9200H6054	O-RING (5S)	1
26	987029	BEARING (62012Z)	1	55	9200H6055	O-RING (A5016)	1
27	9200H6077	WASHER	1	56	9200H6056	STOP SPANNER (A6M1)	1
28	987030	REAR PLATE	1	57	9200H6057	STOP SPANNER (23.7MM)	1
29	987031	ROTOR BLADE	4	58	9200H6058	DISC COVER	1
				62	9200H6062	O-RING	2

### Limited Warranty

Universal Tool warrants its tools to be free from defects in material and workmanship for one year from the date of purchase. This warranty does not apply to tools which have been abused, misused, modified or repaired by someone other than Universal Tool or its authorized service centers. If a Universal Tool proves defective in material or workmanship within one year after purchase, return it to any authorized service center or to Universal Tool, freight prepaid. Please enclose your name, address and adequate proof of purchase date with a brief description of the defect. Universal Tool will, at its option, repair or replace defective tools, free of charge. Repairs or replacements are warranted as described above for the remainder of the warranty period. Universal Tool's sole liability and your exclusive remedy under this warranty is limited to repair or replacement of the defective tool. There are no other warranties expressed or implied and Universal Tool shall not be liable for incidental, consequential or special damages, or any other damages, costs or expense of repair or replacement as described above.

### Specifications

Model	Motor (HP)	Motor (kW)	Max. Wheel Dia. (in)	Speed (RPM)	Exhaust	Spindle Size	Gear Type	Weight (lb)	Weight (kg)	Length (in)	Length (mm)	Res. Pressure	Air Inlet (in <sup>2</sup> )	Res. Hoses (1.0 in)	Air Consumption (cfm)	Air Consumption (l/min)
UT200H-60-6	2.0	1.47	6-1/2	6,000	Side	5/8 - 11	Type 1	13.5	6.1	19.5	495	90 psi-6.2 bar	1/2"	1/2"	40	10