

Operating Instructions

Tightening screw nuts:

- 1 Choose 1/4" socket and place it on the ratchet head.
- 2 Turn the knob on the ratchet head anti-clockwise.
- 3 Fitting the screw nut by pressing the switch until the motor stops.
- 4 Screw tight the nut manually by hand.

Loosening screw nuts

- 1 Choose 1/4" socket and place it on the ratchet head.
- 2 Turn Knob on the ratchet head clock wise.
- 3 Manually turn the screw nut 1-2 times.
- 4 Loosening screw nuts by pressing the switch until the nut comes off completely.

WARNING:

Some dust created by power sanding, sawing, grinding, drilling, and other construction activities contains chemicals known to cause cancer, birth defects or reproductive harm. Some examples of these chemicals are:

- Lead from lead-based paints
- Crystalline silica from bricks, cement and other masonry products
- Arsenic and chromium from chemically treated lumber

Your risk from these exposures varies, depending on how often you do this type of work. To reduce your exposure to these chemicals, work in a well-ventilated area and work with approved safety equipment such as those dust masks that are specially designed to filter out microscopic particles.

Description

Florida Pneumatic ratchet wrench is designed for a wide variety of fastening applications. This unit features Voltage Rating 7.2 Volts, Maximum Torque 18 foot pounds.



Safety Instructions

The following instructions are furnished as general guidelines for use of your tool. They cannot comprehensively cover all possible or conceivable uses of the subject tool.

Tool Application and Usage

Portable tools shall be used only for the purposes intended in their design and within the capacity for which they were intended and rated. It shall be the tool owner's and/or employer's responsibility to instruct each operator in the safe use of the tool. Tools shall not be used without guards and safety devices as furnished by the manufacturer.

Tool Maintenance

It shall be the tool owner's and/or employer's responsibility to assure that tools are maintained in a safe operating condition. Tool maintenance and repair shall be performed by authorized, trained, competent personnel. Repairs shall be consistent with the manufacturer's recommended procedures. It shall be the tool owner's and/or employer's responsibility to keep required rating markings and warnings on the tool in legible condition.

Read Operating Instructions

Always become familiar with all the instructions and warnings before operating any power tool.

Always Wear Approved Eye Protection



Impact resistant eye protection should meet or exceed the standards as set forth in the United States ANSI Z87.1, Occupational and Educational Eye and Face Protection. Look for the marking Z87.1 on your eye protection to insure that it is an approved style. For further information, ANSI Z87.1, Occupational and Educational Eye and Face Protection, is available from the American National Standards Institute, Inc., 11 West 42nd Street, New York, NY 10036.

Hearing Protection is Recommended



Hearing protection should be used when the noise level exposure equals or exceeds an 8 hour time-weighted average sound level of 85 dBA. Process noise, reflective surfaces, other tools being operated nearby, all add to the noise level present in your work area. If you are unable to determine your noise level exposure, we recommend the use of hearing protection.

Avoid Prolonged Exposure to Vibration



Tools can vibrate during use. Prolonged exposure to vibration or very repetitive hand and arm movements, can cause injury. Stop using any tool if discomfort, tingling feeling or pain occurs. You should consult your physician before resuming use of the tool.

General safety instructions

WARNING

1. Consider work area environment. Do not expose tools to rain. Do not use tools in damp or wet locations: keep work area **clean and** well lit. Do not use tools in the presence of flammable liquids or gases.
2. Guard against electric shock. Avoid body contact with earthed or grounded surfaces.
3. Keep children away. Do not let visitors touch the tools or extension cord. All visitors should be kept away from work area.
4. Store idle tools. When not in use, tool should be stored in a dry locked up place, out of reach of children.
5. Do not force the tool. It will do the job better and safer at the rate for which it was intended.
6. Do not abuse the cord. Never yank the cord to disconnect it from the socket. Keep the cord away from heat, oil and sharp edges.
7. Avoid unintentional starting. Ensure switch is off when plugging in.
8. Use outdoor extension leads. When tools are used outdoors only extension cords intended for outdoor use and so marked.
9. Stay alert. Watch out what you are doing: use common sense. Do not operate tool when you are tired. Check damaged parts. Before further use of the tool, a guard or other part is damaged should be carefully checked to determine that it will operate properly and perform its intended function.
10. Check for alignment of moving parts, blinding of moving parts, breakage of parts, mounting and any other condition that may affect its operation.
11. A guard or other parts that is damaged should be properly repaired or replaced by an authorized service center unless otherwise indicated in this instruction manual. Have defective switches replaced by an authorized service center. Do not use tool if switch does not turn it on.
12. To ensure the designed operational integrity of power tools, do not remove installed cover or screws.
13. Do not touch movable parts or accessories the power source has been disconnected.
14. Use your tool at lower input than specified on the nameplate, otherwise, the finish may be spoiled and working efficiency reduced by motor overload.
15. Do not wipe plastic parts with solvent. Solvents such as gasoline, thinner, benzine, carbon tetrachloride, alcohol, ammonia and oil containing chloric annex may damage and crack plastic parts. Do not wipe them with such solvent. Wipe plastic parts with a soft cloth lightly dampened with soap water.

Important safety instructions for charger & battery cartridge

WARNING

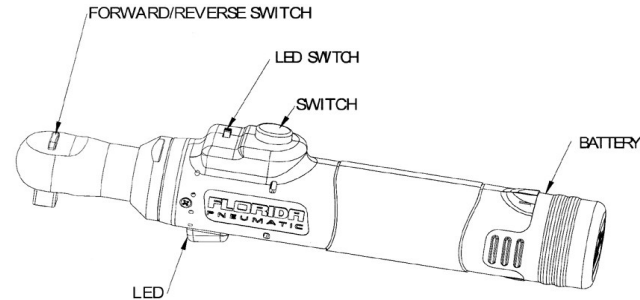
1. Caution: To reduce risk of injury, charge only specific type rechargeable batteries. Other types of batteries may burst causing personal injury and damage.
2. Before using battery charger, read all instructions and cautionary markings on batteries and chargers.
3. Do not expose charger to rain snow.
4. To reduce the risk of damage to electric plug and cord, pull by plug rather than cord when disconnecting charger.
5. Use of an attachment not recommended or sold by the battery charger manufacture may result in a risk of fire, electric shock, or injury to persons.
6. Make sure cord is located so that it will not be stepped on, tripped on, tripped over, or otherwise subjected damage or stress.
7. Do not operate charger with damaged cord or plug. Replace them immediately.
8. Do not operate charger if it has received a sharp blow, been dropped, or otherwise damaged in any way, take it to qualified center.
9. To reduce risk of electric shock, unplug charger from outlet before attempting any maintenance or cleaning. Turning off controls will not reduce this risk.
10. Do not disassemble charger or battery cartridge, take it to a qualified service center while repair is required. Incorrect reassembling may result in a risk of electric shock or fire.

Additional safety rules for charger & battery cartridge

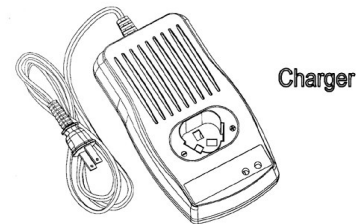
WARNING

1. Do not charge battery cartridge when temperature is below 10°J(50°K) or above 40°J(104°K).
2. Do not attempt to use a set-up transformer, an engine generator or DC power receptacle.
3. Do not allow any thing to cover or clog the charger vents.
4. Always cover the battery terminals with the battery cover when the battery cartridge is not used.
5. Do not short the battery cartridge:
Do not touch the terminals with any conductive material.
Avoid storing battery cartridge in a container with other metal objects such as nails, coins etc.
Do not expose battery cartridge to water or rain. A battery short can cause large current flow, overheating, possible burns and even a breakdown.
6. Do not store the machine and battery cartridge in locations where the temperature may reach or exceed 50°(122°K).
7. Do not incinerate the battery cartridge even if it is severely damaged or completely worn out. The battery cartridge can explode in a fire.
8. Be careful not drop, shake or strike battery.
9. Do not charge inside a box or container of any kind. The battery must be placed in a well ventilated area during charging.

View the major parts:

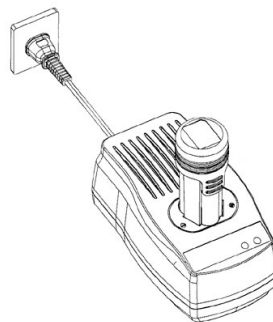


Accessory



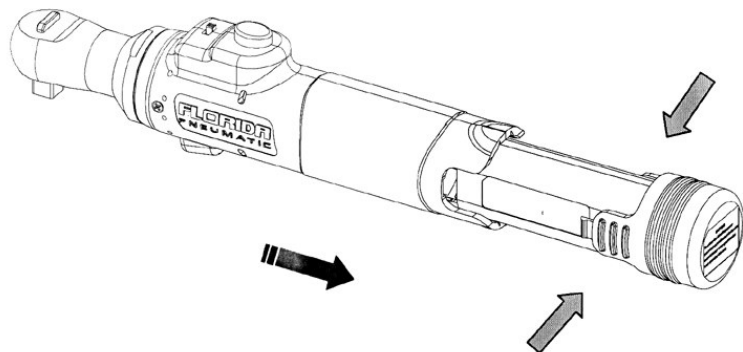
General Precaution for charging the battery

- *Use the specified charger for this tool only.
- Other charger may damage the battery.
- The general battery charging cycle is about 500 cycle but the Unqualified charger may reduce the battery life.



The LED light on the charger:

- Red light-battery in charging
- Green light-trickle charge



How to remove/insert the battery

Push the Knobs on the both sides of battery pack and pull the battery to remove the battery from the unit.

To re-install the battery, insert the battery into the unit until the "Ka" sound is heard.

Charging the battery

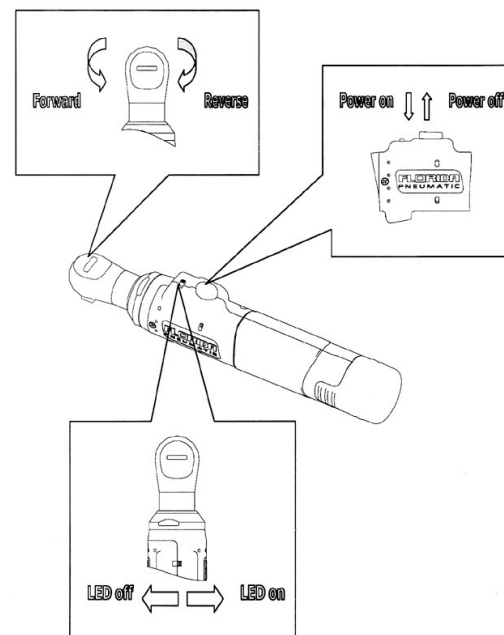
Do not charge battery pack when temperature is below 10°C(50°F) or above 40°C(104°F).

1. While charge the cool battery (below 5°C) in the warm indoor, keep the battery in the room for one hour to warm up before starting the battery. A cool battery may charge unsaturated.
2. Remove the plug after finishing the charge.
3. The charger should be cooled at least one hour after continue charging three times.
4. Do not use generator for charging the battery.

⚠WARNING:

Do not charge the battery in the rain, snow or high temperature environment.

Operating the tool



Drive size.....	1/4"
Free speed.....	170 RPM
Maximum Torque.....	18 ft.-lbs.
Bolt Capacity.....	3/8"
Weight.....	1.3 lbs.
Overall length.....	10-1/2"
Voltage.....	7.2 Volts

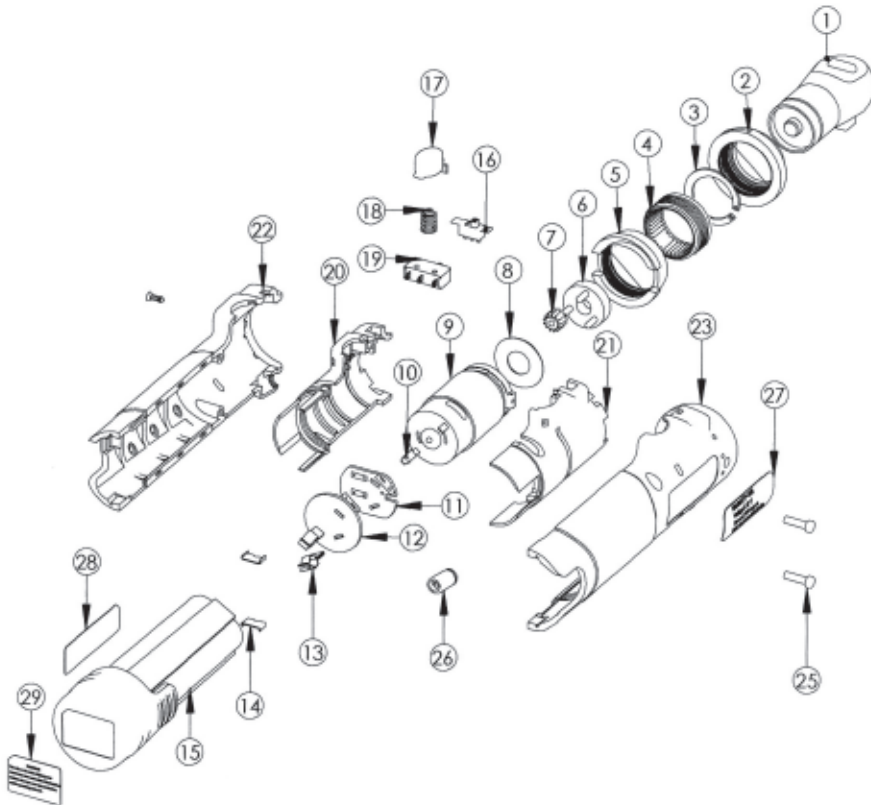
Parts Breakdown for FP105

USE ONLY POWER SOCKETS & ACCESSORIES

Sockets and accessories used shall be of the power socket type. Always check sockets, retainers and drives regularly for wear or damage and replace whenever necessary

Replacement Parts for FP105

Ref.	Description	Part #	Ref.	Description	Part #
1	Ratchet Head Ass'y	9123401	17	Switch Button	9123417
2	Lock Ring	9123402	18	Switch Spring	9123418
3	C-Ring	9123403	19	Main Switch	9123419
4	Ring Gear	9123404	20	Insulation (L)	9123420
5	Ring Gear Holder	9123405	21	Insulation (R)	9123421
6	Planet Gear Holder	9123406	22	Main Housing (L)	9123422
7	Planet Gears	9123407	23	Main Housing (R)	9123423
8	Washer	9123408	24	Screw	9123424
9	Motor Ass'y	9123409	25	Screw	9123425
10	Motor Connector	9123410	26	Led Ass'y	9123426
11	PCB	9123411	27	Spec Label	9123427
12	Connector Base	9123412	28	Battery Label	9123428
13	Battery Connector	9123413	29	Warning Label	9123429
14	Housing Fixture	9123414	*30	Replacement Battery	9123430
15	Battery Pack	9123415	*31	Battery Charger	9123431
16	Led Switch	9123416	(*)	Not Shown.	



Limited Warranty

Florida Pneumatic warrants its tools to be free from defects in material and workmanship for two years from the date of purchase. This warranty does not apply to tools which have been abused, misused, modified or repaired by someone other than Florida Pneumatic or its authorized service centers. If a Florida Pneumatic proves defective in material of workmanship within one year after purchase, return it to any authorized service center or to Florida Pneumatic, freight prepaid. Please enclose your name, address and adequate proof of purchase date with a brief description of the defect. Florida Pneumatic will, at its option, repair or replace defective tools, free of charge. Repairs or replacements are warranted as described above for the remainder of the warranty period. Florida Pneumatic's sole liability and your exclusive remedy under this warranty is limited to repair or replacement of the defective tool. There are no other warranties expressed or implied and Florida Pneumatic shall not be liable for incidental, consequential or special damages, or any other damages, costs or expense of repair or replacement as described above.